

Protecting Coromandel Town

Flood protection

Flood protection reduces the likelihood of floods impacting on our communities. It safeguards lives and property, enables use of land, and protects services such as water supply and power. However, some people have no idea that flooding was an issue in the past, or even know they are protected by schemes.

Why was the scheme built?

The Whangarahi and Karaka streams have a combined 16 square kilometre catchment that originates in the western Coromandel Ranges. These catchments, which are relatively steep and covered in regenerating native vegetation and scrub, are also susceptible to short duration but high intensity rainfall events that cause flash flooding and debris flows with little or no warning. The Whangarahi Stream flows out of the Coromandel Ranges before draining to the Coromandel Harbour. The Karaka Stream also rises in the



Rock rip rap protects the Karaka Stream bank from erosion on a bend.

Coromandel town before draining into the Whangarahi Stream.

As part of the Peninsula Project, Waikato Regional Council and Thames Coromandel District Council worked with Coromandel town's community to develop a flood mitigation strategy to address the Whangarahi and Karaka streams flood hazard.

Due to feedback from the community, a full flood mitigation scheme for Coromandel town was not constructed.

The flood infrastructure provides protection only to the central business district and residential dwellings in the vicinity of the Kapanga Bridge Road from a 1% annual exceedance probability (AEP) event.

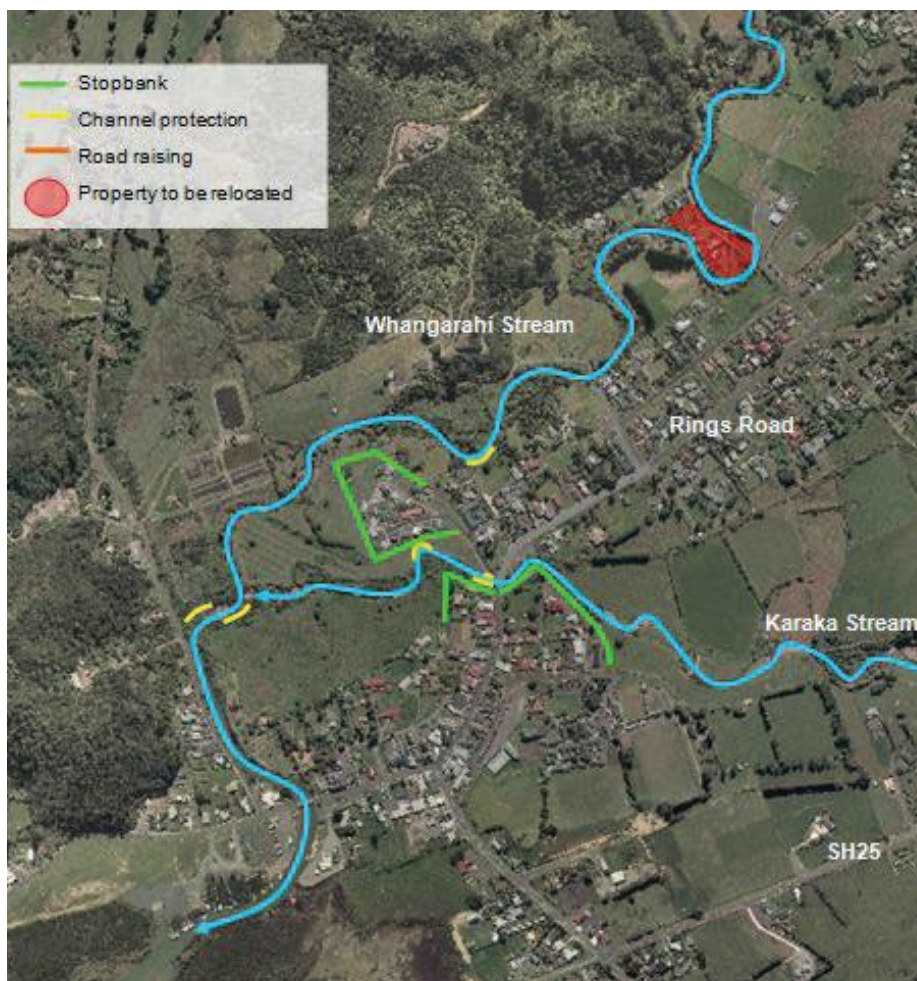
The scheme includes stopbanks around Elizabeth Park Retirement Village and along the right bank of Karaka Stream to the north of Kapanga Road Bridge. Channel protection works, including rock rip rap, was completed to increase channel capacity and protect the critical bends of the streams.

Four residential properties identified as being at particularly high risk were purchased by the council and removed, with the land used as a floodway as part of the scheme.

Residual flood risk

'Residual flood risk' is a term used to describe a river flood risk that exists due to the potential for 'greater than design' flood events to occur.

Also, as the Coromandel community did not agree to the implementation of a full flood protection scheme, parts of the community are still subject to flood hazard from flooding from the Whangarahi and Karaka streams.



Completed flood mitigation works at Coromandel.

To find out more about flood protection in the Coromandel area visit waikatoregion.govt.nz/integrated-catchment-management/asset-management.