

SUMMARY

# Whangapoua Harbour and Catchment Management Plan

TE MAHERE WHAKAHAERE MŌ TE WHANGA  
O WHANGAPOUA ME ŌNA ROHE WAI



# Whangapoua Harbour

Whangapoua Harbour has long been a pātaka kai (pantry) for local and other iwi in the Coromandel Peninsula, as well as a recreational playground for many.

The Whangapoua Harbour and Catchment Management Plan provides an overarching strategy for enhancing the health and long term wellbeing of this harbour, and its surrounding land and communities.

## Community driven

### ARONGA HAPORI

Everyone with an interest in the Whangapoua catchment – iwi, local landowners and residents, people who volunteer and work in the catchment, and those who visit it – had opportunities to share with us what was important to them and the concerns they had about its health and wellbeing.

The plan reflects their vision, key concerns and aspirations for the future of the harbour and catchment.



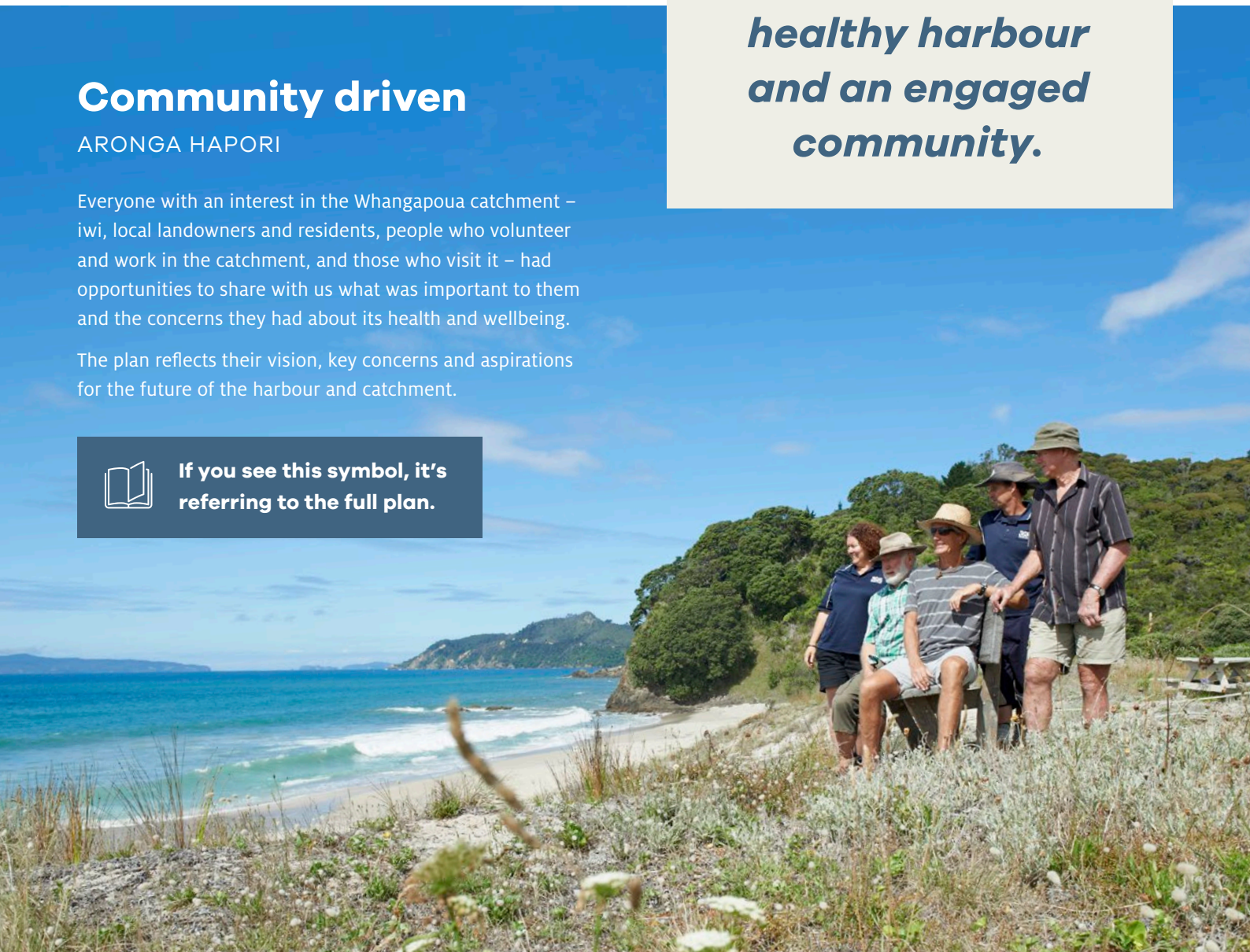
**If you see this symbol, it's referring to the full plan.**

## Vision

### ARONGA KI TUA

- The ability for people to access, enjoy and connect to our catchment and coastal environments, both now and in the future.
- Waters are clean, catchments are stable and healthy, and the mauri of the area is enhanced.
- Recognise the role of the harbour as a pātaka kai and retain the natural beauty and unspoilt nature of the area.

***A healthy catchment, a healthy harbour and an engaged community.***





# Why have a harbour and catchment management plan?

## HE AHA TE TAKE O TE MAHERE WHAKAHAERE E KÖREROTIA NEI?

- It's a way for people to share what they want their environment to be like in the next 10 to 50 years and identify the issues they want addressed. The issues and related actions will be reviewed regularly.
- It connects people with their neighbours and their natural environment.
- It includes an assessment of current environmental pressures and issues in the harbour and catchment. Environmental changes will be measured against this information to ensure progress is being made.
- It coordinates works and efforts to achieve positive change for the local environment, with a particular focus on water and soils.
- It will guide Waikato Regional Council's work in the Whangapoua catchment. It also suggests how our council, other government organisations, iwi and landowners can work with each other to help achieve community goals.
- It shows people what they can do to make a difference.
- It lists in one place useful research and resources.

## Check out the catchment

### TIROHIA TE ROHEROHENGA WAI

A catchment is an area of land surrounded by high points, such as mountains or hills, and where all water flows to a common point. We have expanded this further to include the communities that interconnect with the northeast coast and Whangapoua Harbour.

The Whangapoua Harbour and Catchment Management Plan area stretches from Wainuiototo (New Chums Beach) back along the eastern flanks of the Coromandel Range to Castle Rock/Motutere, then across the upper reaches of the main rivers from west to east (Waitekuri, Opitonui, Owerā, Otanguru, Kuaotunu and Ōpito peninsula catchments), with Matapaua Bay being the most eastern point.

## A collective responsibility

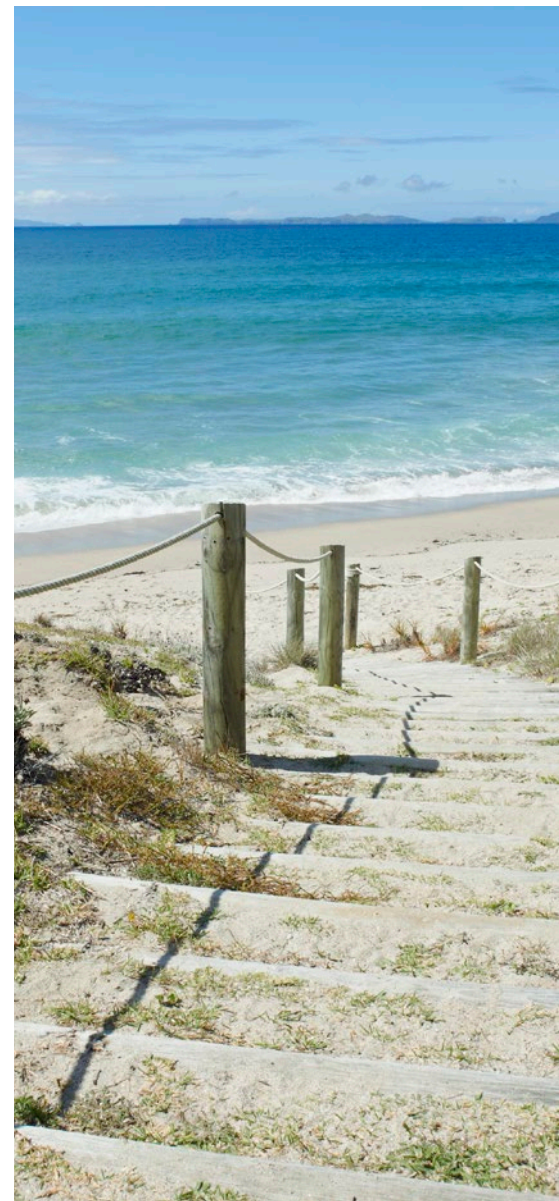
### HAEPAPATANGA Ā-HAPORI

The Whangapoua Harbour and Catchment Management Plan is non-statutory. In other words, nobody's legally required to carry out any of the recommended actions, so its success relies on people and organisations choosing to take action.

The plan may be used to inform and support statutory documents like district, regional and coastal plans.

**This is a summary of the Whangapoua Harbour and Catchment Management Plan. Read the full plan at:**

[waikatoregion.govt.nz/whangapoua-hcmp](https://www.waikatoregion.govt.nz/whangapoua-hcmp)





# Five key areas for action

NGĀ WĀHANGA E RIMA KA TAUTAPATIA

Through the conversations we had and feedback received, five key themes emerged: people, land, water, coast and harbour, and biodiversity.

## Background information

The full Whangapoua Harbour and Catchment Management Plan has detailed information about the people, including the area's cultural heritage, as well as characteristics of the land and how it's used. It also includes an assessment of the catchment's water, coast and harbour resources, and biodiversity. The background information gives an understanding of the recommended actions in the plan.

The full plan shows how every action links to a specific issue. The recommended actions build on work already happening in the catchment.

*The recommended actions described in the following tables have been condensed and summarised. See relevant sections in the full plan for complete details, including the issues these actions will address and the work that's already happening in the catchment.*

## 1. The people

TE IWI

### What we'll focus on

- The health and wellbeing of Whangapoua's harbour, catchment and communities.
- Involving iwi in management approaches.
- Partnerships between community, iwi, forestry and agencies.

### What we'll do

#### Summary of recommended actions (section 13)

Work with iwi and others to prepare an iwi environmental management plan.

Identify archaeological sites and sites of significance.

Increase interpretation of historic and cultural values at Opera Point Reserve ( also included in key area 5: Biodiversity).

Discuss with iwi the review period for this harbour and catchment management plan.

Collate a "tool box" of customary tools.

Iwi and others to undertake cultural mapping.

Iwi and others to carry out environmental monitoring.

Identify opportunities to increase or improve recreation sites.

Iwi to undertake further work to identify appropriate areas for papa kāinga (Māori housing).

Subject to the Hauraki iwi settlement, discuss and put in place management arrangements.

Work with iwi and others to apply for additional funding to support projects in the catchment.

The regional and district councils, Department of Conservation (DOC) and iwi to meet annually to discuss work programmes and identify areas for collaboration, so as to inform budget planning.

Work with community groups to identify the best ways to coordinate the work they carry out.

### How you can help make a difference

- Get involved in a care group. To find your closest group, visit [waikatobiodiversity.org.nz](http://waikatobiodiversity.org.nz) or ask us – call 0800 800 401.
- Keep in touch with what's happening in your area. For actions being carried out at the Whangapoua, Matarangi, Kuaotunu, Rings Beach, Otama and Ōpito reserves, view the Thames-Coromandel District Council's Mercury Bay North Reserve Management Plan. To request a copy, call 07 867 2020.

## 2. Land

### WHENUA

#### What we'll focus on

- Sustainable land use practices now and into the future.
- Reducing the amount of erosion and sediment entering waterways.
- Enhancing riparian areas and restoring wetlands.

#### What we'll do

##### Summary of recommended actions (section 14)

Develop river management and restoration works programmes for each sub-catchment.

Work with willing landowners to provide them with comprehensive farm plans.

Work with landowners to fence, where possible, the riparian margins, coastal and harbour margins, and wetlands that are not yet stock proof.

Provide information and advice to landowners through on farm discussions and field days.

Encourage landowners to fence remnant bush areas.

Ensure culverts, bridges and drains are constructed and maintained to minimise sediment losses and maximise fish passage.

Investigate opportunities to establish a "showcase catchment" where best practice is demonstrated and alternative methods trialled.

Identify opportunities for wetland/dune restoration for the purpose of sediment retention.

Continue to work with Ernslaw One on best practice approaches for managing earthworks and effects on soils from harvesting. It's also recommended that the wider community continue to receive information on forestry activities and monitoring in the catchment.

Investigate with Ernslaw One opportunities to retire and protect wetlands and riparian areas.

Collectively explore opportunities for broad scale possum control in the upper catchment to help maintain a healthy forest canopy ( also included in key area 5: Biodiversity).

When reviewing the Waikato Regional Plan, promote stronger controls on the removal of indigenous vegetation in erosion-prone areas.

DOC to investigate opportunities to expand its goat control operations into the upper ranges of the catchment.

Waikato Regional Council to support communities and other agencies to explore opportunities to purchase and retire erosion-prone land.

When reviewing the Waikato Regional Plan, investigate regulatory controls on land use change and development.

#### How you can help make a difference

- Find out about sustainable land management practices and the benefits they can have on your farm operation and the environment. Start by calling your local Waikato Regional Council catchment management officer on 0800 800 401.
- Share experiences and information with other farmers.
- Have a look at our best practice guides. See the back page of this summary for web links.


# 3. Water

WAI

## What we'll focus on

- Improving water quality and ecosystems in streams.
- Addressing flood issues.
- Increasing riparian plantings.

## What we'll do

 Summary of recommended actions (section 15)
Thames-Coromandel District Council (TCDC) to carry out a water quality and ecological investigation to determine the effects of the discharge from the Matarangi wastewater treatment plant on the health of Maupariki Stream, Matarangi Wildlife Habitat Reserve and humans.
Analyse and follow up results of the water sampling programme carried out over the summer of 2014/15.
Work with others to manage point source stormwater discharges to streams.
Develop an appropriate water quality monitoring programme for the harbour and streams in the catchment.
Outcomes of the regional review of on-site wastewater risks to guide policy development for the Waikato Regional Plan.
Determine appropriate limits for water takes from streams and groundwater in accordance with Variation 6 (Water Allocation) to the Waikato Regional Plan.
Promote techniques for reducing water use.
Proactively manage stream mouths over summer to ensure sand and sediment doesn't build up around them, exacerbating flood risk.
Investigate opportunities to incorporate natural river system techniques into river management works, and better use natural wetland areas to assist with flood protection and water filtering.

## How you can help make a difference

- Get a plumbing and drainage contractor to inspect and maintain your septic tank, and replace your system if it isn't working well.
- Understand your flood risk and find ways to reduce the impact of flooding to your home or business.
- Report pollution in waterways, or an environmental incident, to our 24/7 freephone – 0800 800 401.

# 4. Coast and harbour

TAKUTAI ME TE AKA

## What we'll focus on

- Restoration activities that may improve shellfish beds and enhance fish stocks.
- Protecting the natural state of the harbour and coast.
- Addressing concerns regarding the spread of mangroves.

## What we'll do

### Summary of recommended actions (section 16)

Agencies to use information about options for marine protected areas from the marine spatial plan, *Sea Change – Tai Timu Tai Pari*, to inform their own statutory processes.

Support research on shellfish enhancement projects and work with others to identify options for progressing work in this area.

Waikato Regional Council to consider undertaking saltwater paspalum control work at key sites in the harbour, and DOC to continue its spartina control programme.

When reviewing the Waikato Regional Coastal Plan, consider and consult on options for mangrove management.

DOC to continue its ongoing role in managing Otama Reserve and Waikato Regional Council to continue supporting Coastcare (formerly Beachcare).

Waikato Regional Council and TCDC to continue working collaboratively on a strategy for managing coastal erosion.

Assess the extent and condition of Whangapoua's dunelands and prioritise actions and opportunities to protect and restore them. The development of a strategic directions plan for the Coastcare programme will support this work.

Waikato Regional Council to continue to provide navigation safety services.

Identify low-lying land that is susceptible to coastal inundation and develop digital tools to identify the extent of the inundation. Also, provide supporting information.

Provide the public and stakeholders with information about the projected impacts of climate change.

Undertake tsunami modelling for the Whangapoua/Matarangi area.

Work with others to minimise the risk and damage to communities from tsunami, and ensure people are prepared for an event like this.

## How you can help make a difference

- Learn more about estuarine sedimentation. See the back page of this summary for web links.
- Join a Coastcare group. For more information call us on 0800 800 401.
- Stay informed about the risk of tsunami and make sure you know the evacuation route for your town. See the back page for web links.
- Be prepared for a hazard event and make a household emergency plan. A template is available on the Waikato Civil Defence Emergency Management Group website (web link on back page).
- Report unsafe behaviour on waterways and any navigation hazards, like large logs and drifting vessels, to our Maritime Services team on 0800 800 401 or email [harbourmaster@waikatoregion.govt.nz](mailto:harbourmaster@waikatoregion.govt.nz).
- Watch the bar crossing films and attend a Coastguard bar crossing education day.
- Know the rules of the water – download the free MarineMate app.

# 5. Biodiversity

## KANORAU KOIORA

### What we'll focus on

- Protecting and enhancing biodiversity values and habitats.
- Developing ecological corridors.
- Re-establishing and restoring wetland areas.

### What we'll do

#### Summary of recommended actions (section 17)

Identify priority sites and opportunities for wetland, dune and forest fragment restoration, as well as opportunities to restore biodiversity corridors.

Identify opportunities to enhance fish passage and habitat in the catchment and share any new research that becomes available.

Identify opportunities for wetland and dune restoration through TCDC's review of its reserve management plans.

Community-led volunteer groups to carry out ongoing predator and weed control work.

Waikato Regional Council and TCDC to manage earthworks in the vicinity of significant natural areas and areas containing kauri to prevent the spread of kauri dieback. DOC to also help prevent the spread of this disease by promoting interpretative information about kauri dieback and methods for people to clean boots and other gear.

TCDC to consider cat and dog free and/or avian aversion training requirements for new subdivisions, where appropriate.

DOC to work with Ngāti Huarere on funding options for increased predator control in the catchment. DOC to also undertake ongoing predator control as part of its New Zealand dotterel programme.

Make guideline *Constructed treatment systems for surface water inflows to shallow lakes* available when complete. It contains useful information for wetland management/restoration projects.

### How you can help make a difference

- Plant native trees. We have a number of restoration planting guides to help you decide what to plant where, as well as a native plant scheme providing you with affordable eco-sourced plants for your project. See the back page for web links.
- Talk to your local Waikato Regional Council catchment management officer (0800 800 401) and DOC about funding that may be available to support your biodiversity protection/enhancement project. Regional council staff can also provide expert advice.
- Learn more about wetlands. See the back page of this summary for web links.
- Find out about ecological restoration work that groups and individuals are doing in your area and around New Zealand.
- Use the NZ Grass Key developed by Landcare Research to identify native New Zealand grasses from those that have naturalised here (web link on the back page).
- Learn how to identify New Zealand's native birds.
- Talk to QEII National Trust about putting a covenant on your land to protect any special natural and cultural features.
- If you're thinking about carrying out any restoration works on your property, check the *Significant Natural Areas* report on the Waikato Regional Council website for biodiversity values in your area. You may be able to enhance them.
- Get involved in a care group. To find your closest group, visit [waikatobiodiversity.org.nz](http://waikatobiodiversity.org.nz) or ask us – call 0800 800 401.
- Keep in touch with what's happening in your area. Two great resources available from TCDC are the *Mercury Bay North Reserve Management Plan* and *Tree Master Plan*. To request copies, call 07 867 2020.
- Control plant and animal pests on your property. For advice, call your local Waikato Regional Council biosecurity officer (0800 800 401) or our biosecurity team (0800 BIOSEC).
- Become a dotterel minder. Contact DOC to find out more.



# Useful resources

## **Waikato Regional Council website**

### Best practice guides

**Best practice environmental guidelines – land drainage**  
[waikatoregion.govt.nz/tr200606r](http://waikatoregion.govt.nz/tr200606r)

**Best practice guidelines for vegetation management and in stream works to improve water quality**  
[waikatoregion.govt.nz/tr0741](http://waikatoregion.govt.nz/tr0741)

**Environment Waikato best practice guidelines for waterway crossings**  
[waikatoregion.govt.nz/tr0625R](http://waikatoregion.govt.nz/tr0625R)

### Estuarine sedimentation

**Estuary sedimentation: A review of estuarine sedimentation in the Waikato region**  
[waikatoregion.govt.nz/tr200513](http://waikatoregion.govt.nz/tr200513)

**Coastal sedimentation: What we know and the information gaps**  
[waikatoregion.govt.nz/tr200812](http://waikatoregion.govt.nz/tr200812)

### Flood hazard information

[waikatoregion.govt.nz/broadscalefloodinfo](http://waikatoregion.govt.nz/broadscalefloodinfo)

### Information for farmers

[waikatoregion.govt.nz/forfarmers](http://waikatoregion.govt.nz/forfarmers)  
*Includes: effluent management; nutrient management; farm waste; menus of practices to improve water quality; planting, wetlands and waterways management; soil management and erosion control; water takes; forestry; plant and animal pests.*

### Navigation safety

**Bar crossing films**  
[waikatoregion.govt.nz/barcrossing](http://waikatoregion.govt.nz/barcrossing)

### Plant and animal pests

**Pest animals**  
[waikatoregion.govt.nz/animalpests](http://waikatoregion.govt.nz/animalpests)

**Pest plants**  
[waikatoregion.govt.nz/plantpests](http://waikatoregion.govt.nz/plantpests)

**Myrtle rust**  
[mpi.govt.nz/myrtle-rust](http://mpi.govt.nz/myrtle-rust)

**Kauri dieback**  
[waikatoregion.govt.nz/kauri](http://waikatoregion.govt.nz/kauri)

### Planting guides

[waikatoregion.govt.nz/planting-guides](http://waikatoregion.govt.nz/planting-guides)  
*Includes: native plant nurseries; native planting programme; planting natives in the Waikato region; and planting in the Coromandel Peninsula.*

**Wetland planting guide**  
[waikatoregion.govt.nz/wetland-planting-guide](http://waikatoregion.govt.nz/wetland-planting-guide)

### River levels and rainfall monitoring

**River level and flow**  
[waikatoregion.govt.nz/riverlevels](http://waikatoregion.govt.nz/riverlevels)

**Rainfall**  
[waikatoregion.govt.nz/rainfall](http://waikatoregion.govt.nz/rainfall)

### Significant Natural Areas of the Thames–Coromandel District: Terrestrial and Wetland Ecosystems

[waikatoregion.govt.nz/tr201036](http://waikatoregion.govt.nz/tr201036)

### Tsunami

[waikatoregion.govt.nz/tsunami](http://waikatoregion.govt.nz/tsunami)  
*Includes: how tsunami develop; effects of tsunami; tsunami types.*

**Eastern Coromandel Tsunami Strategy**  
[waikatoregion.govt.nz/eastern-coromandel-tsunami-strategy](http://waikatoregion.govt.nz/eastern-coromandel-tsunami-strategy)

### Water quality monitoring

[waikatoregion.govt.nz/water-quality-monitoring-map](http://waikatoregion.govt.nz/water-quality-monitoring-map)

## **Other websites**

### Beef + Lamb New Zealand

[beeflambnz.com](http://beeflambnz.com)

### DairyNZ

**Sustainable Dairying: Water Accord**  
[dairynz.co.nz/environment/in-your-region/sustainable-dairying-water-accord](http://dairynz.co.nz/environment/in-your-region/sustainable-dairying-water-accord)

### Department of Conservation

**Dotterel minders**  
[doc.govt.nz/get-involved/volunteer/in-your-region/coromandel/dotterel-minders](http://doc.govt.nz/get-involved/volunteer/in-your-region/coromandel/dotterel-minders)

### Global Invasive Species Database

[issg.org/database/welcome](http://issg.org/database/welcome)

### Landcare Research – Manaaki Whenua

**Best Management Practices (BMP) Guide for Water Quality**  
[landcare.org.nz/regional-focus/hamilton-office/bmp-guide-for-water-quality](http://landcare.org.nz/regional-focus/hamilton-office/bmp-guide-for-water-quality)

**NZ Grass Key**  
[landcareresearch.co.nz/resources/identification/plants/grass-key](http://landcareresearch.co.nz/resources/identification/plants/grass-key)

### National Wetland Trust of New Zealand

[wetlandtrust.org.nz](http://wetlandtrust.org.nz)

### Nature Space

[naturespace.org.nz](http://naturespace.org.nz)

### New Zealand Birds Online

[nzbirdsonline.org.nz](http://nzbirdsonline.org.nz)

### New Zealand Plant Conservation Network

[nzpcn.org.nz](http://nzpcn.org.nz)

### NIWA

**Mangroves and their role in the environment**  
[niwa.co.nz/freshwater-and-estuaries/research-projects/sediments-and-mangroves](http://niwa.co.nz/freshwater-and-estuaries/research-projects/sediments-and-mangroves)

**NZ Freshwater Fish Database**  
[niwa.co.nz/our-services/online-services/freshwater-fish-database](http://niwa.co.nz/our-services/online-services/freshwater-fish-database)

**Mangrove swamps and coastal marshes to absorb and store carbon**  
[niwa.co.nz/news/muddy-sinks](http://niwa.co.nz/news/muddy-sinks)

**Managing mangrove expansion**  
[niwa.co.nz/freshwater-and-estuaries/management-tools/managing-mangrove-expansion](http://niwa.co.nz/freshwater-and-estuaries/management-tools/managing-mangrove-expansion)

### NZ Landcare Trust

**WETMAK**  
*An online resource for community groups working on wetland restoration projects.*  
[landcare.org.nz/wetmak](http://landcare.org.nz/wetmak)

### QEII National Trust

[qeii-nationaltrust.org.nz](http://qeii-nationaltrust.org.nz)

### Waikato Biodiversity Forum

[waikatobiodiversity.org.nz](http://waikatobiodiversity.org.nz)

### Waikato Civil Defence Emergency Management Group

[waikatoregioncdemg.govt.nz](http://waikatoregioncdemg.govt.nz)

### Weedbusters

[weedbusters.org.nz](http://weedbusters.org.nz)