

Environment Waikato Policy Series 2007/21
(Reprinted April 2012 – incorporating Variations No.2, No.5, No.6 and No.7)

Waikato Regional Plan

Waikato Regional Council
Private Bag 3038
Waikato Mail Centre
HAMILTON

Reprinted April 2012

This is a **REPRINT** of the Plan (as at April 2012) and contains amendments made by:

Variation No. 2 – Geothermal Module (made operative on 7 November 2008);

Variation No. 5 – Lake Taupo catchment (made operative on 7 July 2011);

Variation No. 6 - Water Allocation (made operative on 10 April 2012); and

Variation No. 7 – Minor Variation and Geothermal Maps (made operative on 8 December 2010)

Please email us (policy@ew.govt.nz) for further information on legal status of the Plan.

Waikato Regional Council

Waikato Regional Plan

The Waikato Regional Council resolved, by resolution of Council, on the 30th day of August 2007 to approve and make operative the Waikato Regional Plan with the exception of those parts of the plan subject to:

- Proposed Variation No. 2 – Geothermal Module
- Proposed Variation No. 5 – Lake Taupo Catchment
- Proposed Variation No. 6 – Water Allocation
- Proposed Variation No. 7 – Minor Variation and Geothermal Maps

The Regional Plan will become operative on the 28th day of September 2007.

Signed by Waikato Regional Council by the affixing of its Common Seal in the presence of

JA Vernon
Chairman



HW Wilson
Chief Executive Officer



Dated at Hamilton this 30th day of August 2007.

Waikato Regional Council

Waikato Regional Plan

Variation No.2 – Geothermal Module

Waikato Regional Council prepared Variation No.2 – Geothermal Module to the proposed Waikato Regional Plan in accordance with Sections 65 and 66 of the Resource Management Act 1991 and the First Schedule of the Resource Management Act 1991.

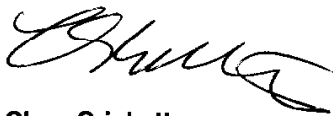
The Waikato Regional Council resolved, by resolution of Council, on the 30th day of October 2008 to approve and make operative Variation No. 2 – Geothermal Module.

Variation No. 2 – Geothermal Module will become operative on the 7th day of November 2008.

Signed by Waikato Regional Council by the affixing of its Common Seal in the presence of



P Buckley
Chairman



Clare Crickett
Acting Chief Executive Officer



Dated at Hamilton this 30 day of OCTOBER 2008.

Waikato Regional Council

Waikato Regional Plan

Variation No.5 – Lake Taupo Catchment

Waikato Regional Council prepared Variation No.5 – Lake Taupo Catchment to the proposed Waikato Regional Plan in accordance with Sections 65 and 66 of the Resource Management Act 1991 and the First Schedule of the Resource Management Act 1991.

The Waikato Regional Council resolved, by resolution of Council, on the 29th day of June 2011 to approve and make operative Variation No.5 – Lake Taupo Catchment.

Variation No.5 – Lake Taupo Catchment will become operative on the 7th day of July 2011.

Signed by Waikato Regional Council by the affixing of its Common Seal in the presence of

P Buckley
Chairman



Bob Laing
Chief Executive Officer



Dated at Hamilton this **29th** day of **June 2011**.



Waikato Regional Council

Waikato Regional Plan

Variation No.7 – Minor Variation and Geothermal Maps

Waikato Regional Council prepared Variation No.7 – Minor Variation and Geothermal Maps to the proposed Waikato Regional Plan in accordance with Sections 65 and 66 of the Resource Management Act 1991 and the First Schedule of the Resource Management Act 1991.

The Waikato Regional Council resolved, by resolution of Council, on the 30th day of September 2010 to approve and make operative Variation No. 7 – Minor Variation and Geothermal Maps.

Variation No. 7 – Minor Variation and Geothermal Maps will become operative on the 8th day of December 2010.

Signed by Waikato Regional Council by the affixing of its Common Seal in the presence of



P Buckley
Chairman



Bob Laing
Chief Executive Officer



Dated at Hamilton this 30th day of September 2010

Waikato Regional Council

Waikato Regional Plan

Variation No.6 – Water Allocation

Waikato Regional Council prepared Variation No.6 – Water Allocation to the proposed Waikato Regional Plan in accordance with Sections 65 and 66 of the Resource Management Act 1991 and the First Schedule of the Resource Management Act 1991.

The Waikato Regional Council resolved, by resolution of Council, on the 29th day of March 2012 to approve and make operative Variation No. 6 – Water Allocation.

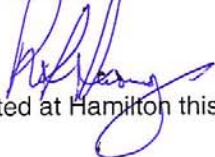
Variation No. 6 – Water Allocation will become operative on the 10th day of April 2012.

Signed by Waikato Regional Council by the affixing of its Common Seal in the presence of

P Buckley
Chairman



Bob Laing
Chief Executive Officer



Dated at Hamilton this 29th day of March 2012

Chairman's Foreword

It is my pleasure to introduce the Waikato Regional Plan. This document will assist people in the Waikato Region to achieve environmental outcomes that the Region as a whole aspires to.

This Plan has been developed by a process of discussion and participation. This relied on the efforts of people interested in the management of the Region's natural and physical resources. I would like to take this opportunity to thank all those who have taken the time to be involved in the process.

This Plan allows movement from the broad general purposes of the Resource Management Act to providing clear, practical guidelines for people who use and manage natural and physical resources. This document gives effect to the Waikato Regional Policy Statement but focuses on Environment Waikato's direct functions under the Resource Management Act and addresses areas where the Council can add clarity and efficiency.

Environment Waikato wants people to be able to get on with their affairs with minimal bureaucracy while keeping high environmental standards. To achieve this, the Plan has made extensive use of permitted and controlled activities to define circumstances where consents are enabled provided minimum standards are met.

This Plan is a living document, designed to meet the changing needs of the Waikato community. As our environmental information improves and the way in which we use our environment changes the plan will be updated. Over time we expect to see more and more catchment specific provisions in the Plan to better recognise the special features of our diverse region. If you want to know anything about its content, or are uncertain about what it means for your activities please contact us.

Jenni Vernon
Chairman
Waikato Regional Council

Table of Contents

Detailed tables of contents for each Chapter will appear at the beginning of each Module. The following is the structure of the document:

PREFACE

READERS GUIDE

Introduction
Structure of the Plan
Abbreviations and Symbols
Relationships Between Rules and Resource Consents
Activity Guide

1 APPROACHES TO RESOURCE MANAGEMENT

- 1.1 Introduction
- 1.2 Approaches to Resource Management
- 1.3 Monitoring the Effectiveness of the Plan
- 1.4 Review of the Plan
- 1.5 Processes to Address Cross-Boundary Issues
- 1.6 Responsibilities of Resource Users Under the RMA

2 MATTERS OF SIGNIFICANCE TO MAORI

- 2.1 Introduction
- 2.2 Iwi in the Waikato Region
- 2.3 Tangata Whenua Relationship with Natural and Physical Resources

3 WATER MODULE

- 3.1 Water Resources
- 3.2 Water Management Classes
- 3.3 Water Takes (*Subject to Proposed Variation No. 6 – Water Allocation*)
- 3.4 Efficient Use of Water (*Subject to Proposed Variation No. 6 – Water Allocation*)
- 3.5 Discharges
- 3.6 Damming and Diverting
- 3.7 Wetlands
- 3.8 Drilling
- 3.9 Non-Point Source Discharges
- 3.10 Lake Taupo Catchment

4 RIVER AND LAKE BED MODULE

- 4.1 River and Lake Bed Management
- 4.2 River and Lake Bed Structures
- 4.3 River and Lake Bed Disturbances
- 4.4 Lake Taupo Mooring Maps

5 LAND AND SOIL MODULE

- 5.1 Accelerated Erosion
- 5.2 Discharges Onto or Into Land
- 5.3 Contaminated Land

6 AIR MODULE

- 6.1 Regional and Local Air Management
- 6.2 The Discharge of Agrichemicals Into Air
- 6.3 Regional Ambient Air Guidelines
- 6.4 Guidelines for Assessment

7 GEOTHERMAL MODULE

- 7.1 Clarification of the Relationship between the Water and Geothermal Modules
- 7.2 Geothermal Module
- 7.3 Issues and Objectives
- 7.4 Policies
- 7.5 General Non-Regulatory Implementation Methods **Error! Bookmark not defined.**
- 7.6 Regional Rules
- 7.7 Environmental Results Anticipated
- 7.8 Monitoring Options
- 7.9 Maps of Geothermal Systems
- 7.10 Maps of Significant Geothermal Features and Geothermal Water Features

8 INFORMATION REQUIREMENTS

- 8.1 Assessment Criteria and Information Requirements

GLOSSARY

MAPS

The maps are provided on CD Rom with this Plan. Please refer to installation guidelines and instructions on the CD for viewing. Maps are also available for viewing at all Waikato Regional Council offices.

Readers Guide

Introduction

The Waikato Regional Plan has been developed by the Waikato Regional Council under the Resource Management Act 1991, and is intended to provide direction regarding the use, development and protection of natural and physical resources in the Waikato Region. The proposed Plan contains modules covering Matters of Significance to Maori, Water, River and Lake Beds, Land and Soil, Air, and Geothermal Resources.

This is a **REPRINT** of the Plan (as at December 2011) and contains amendments made by:
Variation No. 2 – Geothermal Module (made operative on 7 November 2008);
Variation No. 5 – Lake Taupo catchment (made operative on 7 July 2011); and
Variation No. 7 – Minor Variation and Geothermal Maps (made operative on 8 December 2010)
Variation No. 6 – Water Allocation (made operative on 10 April 2012)

Please email us (policy@ew.govt.nz) for further information on legal status.

Structure of the Plan

The proposed Waikato Regional Plan is set out in the following way:

Module 1 – Approaches to Resource Management

This module describes the purpose of the document, and the legislative framework within which it is being developed. The Module also contains the procedural aspects for cross-boundary issues, monitoring and review.

Module 2 - Matters of Significance to Maori

This module outlines the primary resource management issues of concern to Maori, as they are presently understood.

Modules 3 - 7

There are five resource-based modules in this Plan. These relate to water, river and lake beds, land and soil, air, and geothermal resources. Each resource-based module is comprised of a number of chapters. Each chapter relates to an issue or problem that Waikato Regional Council will be managing.

Each chapter within Modules 3 to 7 is structured in the following manner:

The **Chapter Heading** describes the general issues discussed in the chapter.

Background and Explanation gives a general overview of the issue, extent of the problem within the Region and a discussion of associated adverse effects and their causes. This focuses on environmental problems, not process or procedural problems.

The **Issue** statement is a concise summary of the themes in the background and explanation. The issue statement is a statement of concern or problem as it relates to an aspect of natural and physical resources or the management of those resources within the Region.

Objectives are statements of desired outcomes or end states in relation to the management of natural and physical resources.

Principal Reasons for Adopting the Objective explains and justifies the objective statement(s).

Policies are specific statements of the course of action (or type of intervention) which will be taken in order to achieve a stated objective.

Explanation and Principal Reasons for Adopting the Policy explains and justifies each policy.

Implementation Methods are methods, including rules, that are used to implement the objectives and policies.

Explanation and Principal Reasons for Adopting the Methods explains and justifies each implementation method.

Environmental Results Anticipated describes the environmental results anticipated as a result of managing the issue in accordance with the objective and policies discussed. Environmental results anticipated are the results or outcomes expected for the environment, which occur as a consequence of implementing a given policy or method.

Monitoring outlines the indicators and sources of information that may be used to monitor the objectives.

Module 8 - Information Requirements

This module addresses information requirements (for consent applications).

Glossary

Defines the terms used throughout the text.

Maps

Maps are included in this plan on CD Rom for viewing. Maps are available to view at a scale of 1:50,000 at the Hamilton Office of Waikato Regional Council (401 Grey Street, Hamilton East).

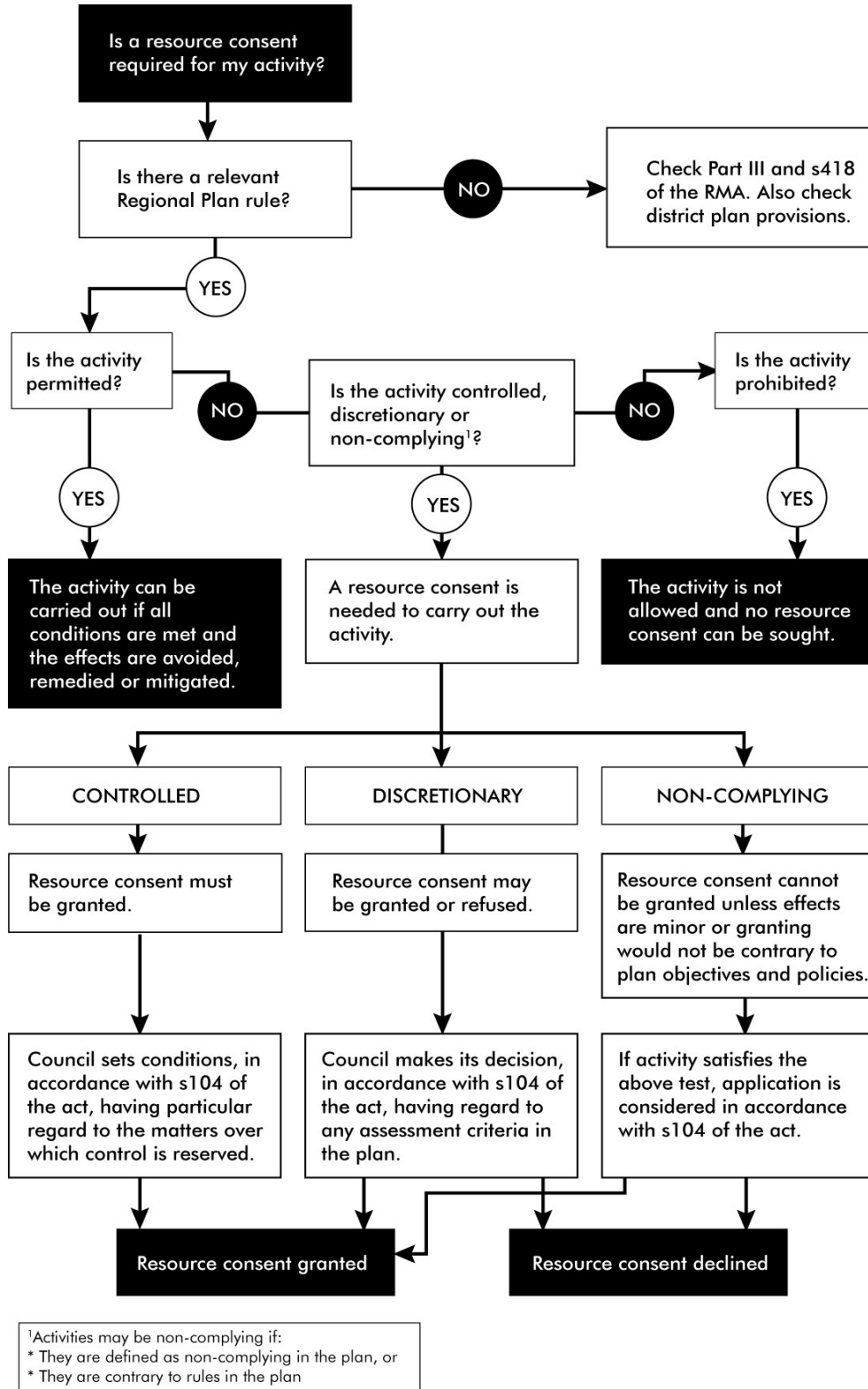
Copies of the maps, at any scale, can be purchased on request from Waikato Regional Council.

Abbreviations and Symbols

BOD	Biological Oxygen Demand
BPO	Best Practicable Option
CMA	Coastal Marine Area
DOC	Department of Conservation
GA	General Authorisation
HSNO	Hazardous Substances and New Organisms Act
MFE	Ministry for the Environment
$\mu\text{g}/\text{m}^3$	Micrograms per cubic metre
mg/kg	Milligram/kilogram
mg/m^3	Milligrams per cubic metre
MHWS	Mean high water springs
OECD	Organisation for Economic Co-operation and Development
OSH	Occupational Safety and Health
pH	Degree of acidity/alkalinity
RLTS	Regional Land Transport Strategy
RCP	Regional Coastal Plan
RMA	Resource Management Act
RPS	Resource Policy Statement
s	Section of statute such as the RMA
TRP	Transitional Regional Plan
WHO	World Health Organisation

Relationship Between Rules and Resource Consents

The following flowchart has been included to clarify the differences between the various types of rules in this Plan. It also shows the RMA process and presumptions applicable to consent applications under the rules.



Activity Guide

Topic	Objective	Policy	Method	Rule
abrasive blasting-discharge to air	6.1.2 Objective 2, Objective 3	6.1.3		6.1.10.1, 6.1.10.2, 6.1.10.3, 6.1.10.4
accelerated erosion	5.1.2, 5.2.2	5.1.3, 5.2.3	5.1.4	5.1.4, 5.2.5.1
acid drainage	5.2.2	5.2.3		5.2.5.1, 5.2.5.3, 5.2.5.4, 5.2.5.2, 5.2.5.6
agricultural application (excluding fertiliser)	6.2.2	6.2.3	6.2.4.1, 6.2.4.2, 6.2.4.3, 6.2.4.4, 6.2.4.5, 6.2.4.6, 6.2.4.7	6.2.4.8, 6.2.4.9, 6.2.4.10, 6.2.4.11
air (discharges to) – general	6.1.2	6.1.3		6.1.9.1, 6.1.9.2, 9.1.19.1
air quality management		6.1.3	6.1.4.4	
aquifer testing	3.1.2	3.5.3		3.3.4.15, 3.5.8.1, 3.5.8.2, 3.5.9.1, 3.5.9.2, 3.8.4.3, 3.8.4.4, 3.8.4.6, 3.8.4.7, 3.8.4.8, 3.8.4.9
artificial watercourses	3.6.2	3.6.3, Policy 1		3.6.4.8, 3.6.4.9
asphalt plants – discharge to air	6.1.2 Objective 3	6.1.2 Policy 1, Policy 2, Policy 4		6.1.19.1
best practicable option	6.1.2	6.1.3 Policy 4		6.1.12.2, 6.1.15.3
biogas discharge from: production, storage, transfer and flaring	6.1.2	6.1.3		6.1.14.1
biosolids – discharges onto or into land	3.1.2, 5.2.2	3.5.3 Policy 3, Policy 4, Policy 5	3.5.6.1, 3.9.4.8, 3.9.4.9	3.5.6.2, 3.5.6.3, 3.5.6.4, 3.9.4.7
boat ramps	4.2.2	4.2.3 Policy 2		4.2.12.1
bore, well or aquifer testing	3.1.2, 5.2.2	3.5.3		3.3.4.15, 3.5.8.1, 3.5.8.2, 3.5.9.1, 3.5.9.2, 3.8.4.3, 3.8.4.4, 3.8.4.6, 3.8.4.7, 3.8.4.8, 3.8.4.9
bridges	4.2.2	4.2.3 Policy 1, Policy 2		4.2.8
buoys	4.2.2	4.2.3 Policy 1		4.2.13.1
burning – backyard	6.1.2	6.1.3	6.1.5.1	6.1.13.1, 6.1.13.2, 6.1.13.3, 6.1.13.4
burning – domestic heating	6.1.2	6.1.3	6.1.5.1, 6.1.5.2	6.1.12.1
burning – industrial energy production	6.1.2	6.1.3		6.1.12.1, 6.1.12.2
burning – open burning and incineration	6.1.2	6.1.3	6.1.5.1	6.1.13.1, 6.1.13.2, 6.1.13.13, 6.1.13.4
burning – vegetation	6.1.2	6.1.3		6.1.13.1
burning – waste	6.1.2	6.1.3		6.1.13.1, 6.1.13.4
caves – activities near cave entrances	5.1.2, 5.2.2	5.1.3 Policy 2, 5.2.3 Policy 2		5.1.4.17, 5.2.5.1, 5.2.5.2, 5.2.5.3, 5.2.5.4, 5.2.5.5, 5.2.5.6, 5.2.6.1, 5.2.6.2, 5.2.6.3, 5.2.6.4
caves – damming	3.1.2, 3.6.2, 4.2.2	3.6.3, 4.2.3	3.6.4.2, 3.6.4.3	3.6.4.4, 3.6.4.5, 3.6.4.9, 3.6.4.10, 3.6.4.14, 3.6.4.15
caves – discharges into caves	3.1.2	3.5.3 Policy 2		3.5.9.1, 9.5.9.2, 3.5.4.5

Topic	Objective	Policy	Method	Rule
caves – entrance formation	5.1.2	5.1.3		5.1.4.17
caves – filling in cave entrances	5.2.2	5.2.3		5.2.5.1, 5.2.5.2, 5.2.5.4, 5.2.5.5, 5.2.6.1, 5.2.6.2
caves – structures	4.2.2	4.2.3		4.2.4
channel training structures	4.2.2	4.2.3 Policy 2		4.2.16.1
chicken shed wash water	3.1.2, 5.2.2	3.5.3, 5.2.3		3.5.5.1, 3.5.5.4
cleanfill	5.2.2	5.2.3	5.2.4.1, 5.2.4.3, 5.2.4.4	5.2.5.4, 5.2.5.5, 5.2.5.6
coating processes – discharge to air	6.1.2	6.1.3		6.1.11.1
combustion processes – discharge to air	6.1.2	6.1.3		6.1.12.1, 6.1.12.2, 6.1.13.1, 6.1.13.2, 6.1.13.3, 6.1.13.4
small scale composting	5.2.2	5.2.3	5.2.4.1, 5.2.4.3	5.2.8.1
greenwaste composting	5.2.2	5.2.3	5.2.4.1, 5.2.4.3	5.2.8.2
contaminated land and soil	5.2.2, 5.3.2	5.2.3, 5.3.3	5.3.4.1, 5.3.4.2, 5.3.4.3, 5.3.4.4, 5.3.4.5	3.5.11.4, 3.5.11.5, 3.5.11.6, 3.5.11.7, 3.5.11.8, 5.2.6.2, 5.2.7, 5.3.4.6, 5.3.4.7, 5.3.4.8, 6.1.13.3
corrosion (of structures)	6.1.2 Objective 3	6.1.3 Policy 1	6.1.8	
culverts	4.2.2	4.2.3		4.2.9
damming	3.1.2, 3.6.2, 4.2.2	3.6.3	3.6.4.1, 3.6.4.2, 3.6.4.3	3.6.4
dams – ephemeral streams	3.1.2, 3.6.2, 4.2.2	3.6.3	3.6.4.2	3.6.4.4, 3.6.4.9
dams – perennial streams	3.1.2, 3.6.2, 4.2.2	3.6.3		3.6.4.5, 3.6.4.10, 3.6.4.12, 3.6.4.14, 3.6.4.16, 3.6.4.8
dams – existing	3.1.2, 3.6.2, 4.2.2	3.6.3		3.6.4.5, 3.6.4.6, 3.6.4.7, 3.6.4.10, 3.6.4.11
dams – offstream	3.1.2, 3.6.2, 4.2.2	3.6.3	3.6.4.2	3.6.4.4, 3.6.4.9
dams – wetland restoration and enhancement	3.1.2, 3.6.2, 4.2.2	3.6.3	3.6.4.2	3.6.4.12, 3.6.4.16
diversions	3.1.2, 3.6.2, 4.2.2	3.6.3	3.6.4.1, 3.6.4.2, 3.6.4.3	3.6.4.7, 3.6.4.8, 3.6.4.11, 3.6.4.13
demolition or removal of structures	4.2.2	4.2.3 Policy 3		4.2.20
discharge and intake structures	4.2.2	4.2.3, Policy 1		4.2.20.1
discharges to air – general rule	6.1.2	6.1.3		6.1.9.1, 6.1.9.2, 6.1.19.1
discharges to lakes, wetlands and caves	3.1.2	3.2.3, 3.5.3 Policy 2, Policy 6	3.5.4.3	3.5.4.6
discharges to land	3.1.2, 5.2.2	3.2.3, 3.5.3 Policies 3 – 6. 5.2.3	3.2.4, 3.2.4.1, 3.5.4.2, 5.2.4.1, 5.2.4.2, 5.2.4.3, 5.2.4.4	Chapters 3.5 and 5.2
discharges to water	3.1.2	3.2.3, 3.5.3 Policies 1, 2 and 6	3.2.4, 3.5.4.1, 3.5.4.2, 3.5.4.3	3.5.4.4, 3.5.4.5, 3.5.4.6
discharges of untreated human or animal effluent to water	3.1.2	3.5.3 Policies 2 and 6		3.5.5.6, 3.5.7.8
disturbances of the beds of lakes and rivers – general rule	4.3.2	4.3.3, Policy 1		4.3.4.4
diversion of water	3.1.2, 3.6.2	3.2.3, 3.6.3	3.2.4, 3.6.4.1, 3.6.4.2, 3.6.4.3	3.6.4.7, 3.6.4.8, 3.6.1.11, 3.6.4.13

Topic	Objective	Policy	Method	Rule
domestic water take (see water takes)	3.1.2, 3.3.2	3.3.3, Policy 9		3.3.4.12, 3.3.4.13, 3.3.4.16, 3.3.4.18, 3.3.4.21, 3.3.4.23, 3.3.4.26
drainage	3.1.2	3.2.3	3.2.4	
drilling	3.1.2, 3.8.2	3.8.3	3.8.4.1, 3.8.4.2	3.8.4.5, 3.8.4.6, 3.8.4.7, 3.8.4.8, 3.8.4.9
drilling fluid discharge	3.1.2, 3.8.2	3.8.3		3.8.4.3, 3.8.4.4
dump	5.2.2	5.2.3		5.2.6.1, 5.2.6.4
dust from metal roads	6.1.2 Objective 1, Objective 2	6.1.3 Policy 1, Policy 2	6.1.6.3	
dust suppressants	5.2.2	5.2.3		5.2.9
earthworks	5.1.2	5.1.3	5.1.4	
erosion control structures in waterways	4.2.2	4.2.3 Policy 1, Policy 2		4.2.15
extraction of stream bed material	4.3.2	4.3.3	4.3.4	4.3.4.4, 4.3.6.1
farm animal effluent	3.1.2, 6.1.2	3.5.3	3.5.4.1, 3.5.4.2, 3.5.4.3, 3.9.4.8	3.5.5.1, 3.5.5.2, 3.5.5.3, 3.5.5.4, 3.5.5.5, 3.5.5.6
farms dumps	5.2.2	5.2.3	5.2.4.1, 5.2.4.3	5.2.6
fertiliser				6.1.9.1
fertiliser use	3.9.2	3.9.3 Policy 1	3.9.4.8, 3.9.4.9	3.9.4.11
floodplains	5.2.2	5.2.3		5.2.5, 5.2.6
fords	4.2.2	4.2.3, Policy 1, Policy 2		4.2.11
geothermal – take and discharge of fluid	3.1.2, 7.3	3.2.3, 7.4		7.6.1, 7.6.2, 7.6.3, 7.6.4, 7.6.5
geothermal – vegetation clearance, soil disturbance, discharges, damming, diversion and livestock access near significant geothermal features and activities in on or under the beds of waterbodies that are significant geothermal features	7.3	7.4		7.6.6
gradient control structures in waterways	4.2.2	4.2.3 Policy 1		4.2.19.1
gravel extraction from the bed of a river	4.3.2	4.3.3 Policy 1		4.3.7
ground water takes (see water takes)	3.1.2, 3.2.2	3.3.3 Policy 10, Policy 12	3.3.4	3.3.4.12, 3.3.4.14, 3.3.4.15, 3.3.4.20, 3.3.4.24, 3.3.4.26
groynes	4.2.2	4.2.3 Policy 2		4.2.16.1
hazardous air contaminants				
hazardous substances	5.2.2	5.3.3, 5.2.3	5.2.4.2, 5.2.4.3, 5.2.4.4, 5.3.4.1, 5.3.4.3	3.1.18.1, 5.2.5, 5.2.6.1, 5.2.6.2, 5.2.6.3, 5.2.8.2, 5.2.9.1
high risk erosion area	5.1.2, 5.2.2	5.1.3, Policy 2, 5.2.3 Policy 2	5.1.4	5.1.4, 5.2.5
hydrocarbon – production, storage, transfer and flaring	6.1.2	6.1.3		6.1.14.1
incineration – discharge to air	6.1.2	6.1.3		6.1.13.1, 6.1.13.2, 6.1.13.3, 6.1.13.4
intake structures	3.1.2, 4.2.2	3.2.3, 4.2.3	3.2.4.1, 3.2.4.4	4.2.10.1, 4.2.4.2
intensive indoor farming – discharges to air	6.1.2	6.1.3	6.1.4.5	6.1.15.1, 6.1.15.2, 6.1.15.3
introduction of vegetation – in waterways	4.3.2	4.3.3 Policy 2		4.3.8
investigation (research)	3.9.2, 5.1.2, 5.3.2	3.9.3, 5.1.3, 5.3.3	3.9.4.8, 5.1.4.2, 5.3.4.4	5.3.4.6, 5.3.4.7

Topic	Objective	Policy	Method	Rule
irrigation –use of water	3.1.2, 3.3.2	3.9.3, 3.3.1, 3.4.3 Policy 1	3.4.4	3.3.4.6, 3.3.4.7, 3.3.4.8
jetties	4.2.2	4.2.3 Policy 2		4.2.12.1
kaitiaki	2.3.2, 3.1.2, 4.2.2, 4.3.2, 5.1.2, 5.2.2, 5.3.2, 6.1.2	3.5.3, 3.6.3, 3.7.3, 3.8.3, 3.9.3, 4.2.3, 4.3.3, 5.1.3, 5.2.3, 5.3.3, 6.1.3, 7.2.3	2.3.4	
lakes – discharges	3.1.2	3.2.3, 3.5.3 Policy 1, 2 and 6	3.5.4.3	3.5.4.5
Lake Taupo catchment – farming	3.10.2	3.10.3	3.10.4.1 to 3.10.4.13	3.10.5.1 to 3.10.5.12
Lake Taupo catchment – wastewater	3.10.2	3.10.3		3.10.6.1 to 3.10.6.6
lakes – water takes	3.1.2, 3.3.2	3.2.3, 3.3.3	3.3.4	3.3.4.25
landfill	3.1.2, 5.2.2	3.2.3, 5.2.3		6.1.13.1, 6.1.13.4, 5.2.7, Table 5-2, 5.3.4.6
layering (trees)	4.3.2	4.3.3 Policy 2		4.3.8
livestock	3.1.2, 4.3.2	3.9.3, 4.3.3 Policy 4, Policy 5	3.9.4, 4.3.5	3.6.4.16, 4.3.5.4, 4.3.5.5, 7.2.6.1, 7.2.6.2
maimai	4.2.2	4.2.3 Policy 1		4.2.7.1
marker buoys, ski lane markers	4.2.2	4.2.3 Policy 1		4.2.13.1
mauri		3.5.3 Policy 6, 3.6.3 Policy 3		
metal processing – discharge to air	6.1.2	6.1.3		6.1.17.1
mineral extraction and processing – discharge to air	6.1.2	6.1.3		6.1.16.1
monitoring and sampling structures in waterways	4.2.2	4.2.3 Policy 1		4.2.17.1
mooring, navigational markers, signs, ski lane markers, canoe gates	4.2.2	4.2.3 Policy 1		4.2.17.1
natural character	3.1.2, 4.2.2, 4.3.2, 5.1.2	3.2.3 Policy 10, 3.6.3 Policy 6, 3.7.3 Policy 1, 4.2.3 Policy 5, 4.3.3 Policy 5, 5.1.2 Policy 1		
non-point source discharges (water)	3.1.2, 3.9.2	3.2.3, 3.9.3	3.2.4, 3.9.4.8, 3.9.4.9	3.9.4.11
odour (objectionable)	5.2.2, 6.1.2 Objective 2, Objective 3	5.2.3, 6.1.3 Policy 1, Policy 2, Policy 4	5.2.4.1, 5.2.4.3, 6.1.8, 6.4.1.1, 6.4.1.2, 6.4.1.3, 6.4.1.4, 6.4.1.5, 6.4.5.6	6.1.15.2, 5.2.6.2, 5.2.6.2, 5.2.8.2
offal holes	5.2.2	5.2.3	5.2.4.1, 5.2.4.3	5.2.6.2, 5.2.6.3, 5.2.6.4
on-site sewage	3.1.2, 5.2.2	3.5.3	3.5.4.1, 3.5.4.2, 3.5.4.3, 3.5.7.1, 3.5.7.2, 3.5.7.3	3.5.7.4, 3.5.7.5, 3.5.7.6, 3.5.7.7
open burning	6.1.2	6.1.3	6.1.5.1	6.1.13.1, 6.1.13.2, 6.1.13.3, 6.1.13.4
overburden	5.2.2	5.2.3	5.2.4.1, 5.2.4.3, 5.2.4.4	5.2.5.1, 5.2.5.2, 5.2.5.3
overburden disposal	5.2.2	5.2.3	5.2.4.1, 5.2.4.3, 5.2.4.4	5.2.5.1, 5.2.5.2, 5.2.5.3
overhead lines, cables, pipelines, ropeways and associated structures	4.2.2	4.2.3 Policy 1		4.2.14.1
piggeries – odour	6.1.2 Objective 2, Objective 3	6.1.3 Policy 1, Policy 2, Policy 4		6.1.15.1, 6.1.15.2, 6.1.15.3

Topic	Objective	Policy	Method	Rule
piggeries – effluent discharges	3.1.2, 5.2.2	3.5.3, 5.2.3	3.5.1.1, 3.5.4.2, 3.5.4.3	3.5.5.3, 3.5.5.4
particulate matter (objectionable) (including dust)	5.2.2, 6.1.2 Objective 2, Objective 3	5.2.3, 6.1.3 Policy 1, Policy 2, Policy 4	6.1.8, 6.4.2.1, 6.4.2.2, 6.4.2.3, 6.4.2.4, 6.4.2.5, 6.4.2.6, 6.4.2.7	6.1.10.1, 6.1.10.2, 6.1.10.3, 6.1.11.1, 3.1.12.1, 6.1.15.2, 6.1.16.1, 5.2.5.2, 5.2.5.5, 5.2.8.2
plant pests	4.3.2, 5.1.2	4.3.3 Policy 2, Policy 3, 5.1.3		4.3.8, 4.3.9
planting	4.3.2	4.3.3 Policy 2		4.3.8
panting – rive and lake beds	4.3.2	4.3.3 Policy 2		4.3.8
pumped floodwater	3.1.2	3.5.3	3.5.4.3	3.5.10.2, 3.5.10.2
reasonable mixing		3.2.3 Policy 11	3.2.4.1, 3.2.4.2, 3.2.4.3, 3.2.4.4, 3.2.4.5	
removal or demolition of structures	4.2.2	4.2.3	4.2.20.1	4.2.20.2, 4.2.20.3
riparian	3.1.2, 5.2.2	3.9.3, 5.2.3	3.9.4	5.2.5.2, 5.2.5.5
riparian vegetation destruction	5.1.2	5.1.3		5.1.4.11, 5.1.4.13, 5.1.4.14, 5.1.4.15
river and lake bed disturbances – general rule	4.3.2	4.3.3		4.3.4.4
roading and tracking	5.1.2	5.1.3		5.1.4.11, 5.1.4.13
sand and gravel	4.3.2	4.3.3 Policy 1	4.3.4.1	4.3.7
sand extraction from the bed of a rive	4.3.2	4.3.3 Policy 1	4.3.4.1	4.3.7
sensitive areas	6.2.2	6.2.3	6.2.4.2, 6.2.4.7	
septic tanks	3.1.2	3.5.3	3.5.4.1, 3.5.4.2, 3.5.4.3, 3.5.7.1, 3.5.7.2, 3.5.7.3	3.5.7.4, 3.5.7.5, 3.5.7.6, 3.5.7.7
sewage	3.1.2	3.5.3	3.5.4.1, 3.5.4.2, 3.5.4.3, 3.5.7.1, 3.5.7.2, 3.5.7.3	3.5.4.5, 3.5.7.4, 3.5.7.5, 3.5.7.6, 3.5.7.7, 3.5.7.8
ski lane markers	4.2.2	4.2.3 Policy 1		4.2.13.1
sludge discharges	3.1.2	3.5.3	3.5.4.1, 3.5.4.2, 3.5.6.1	3.5.4.4, 3.5.4.5, 3.5.6.2, 3.5.6.3, 3.5.6.4
soil disturbance	5.1.2, 5.2.2	5.1.3, 5.2.3	5.1.4	5.1.4, 5.2.5.1, 5.2.5.2, 5.2.5.4, 5.2.5.5, 5.2.5.6
soil disturbance/vegetation destruction in karst landscapes	5.1.2	5.1.3 Policy 2		5.1.4.17
spray drift	6.2.2	6.2.3	6.2.4.1, 6.2.4.2, 6.2.4.3, 6.2.4.4, 6.2.4.5, 6.2.4.6, 6.2.4.7	6.2.4.8, 6.2.4.9, 6.2.4.10, 6.2.4.11
spray painting – discharge to air	6.1.2 Objective 2, Objective 3	6.1.3 Policy 1, Policy 2, Policy 4		6.1.11.1
steam	6.1.2 Objective 2	6.1.3 Policy 1, Policy 2		6.1.9.1, 6.1.12.1, 6.1.12.2
stock truck effluent discharge	3.1.2	3.5.3		3.5.5.1, 3.5.5.4, 3.5.5.5
stock water takes	3.3.2	3.3.3 Policy 6, Policy 7, Policy 8, Policy 10	s14 RMA	3.3.4.23, 3.3.4.24
stopbanks	3.6.2	3.6.3		3.6.4.6, 3.6.4.13
stormwater	3.1.2	3.5.3	3.5.4.1, 3.5.4.3, 3.5.11.1, 3.5.11.2, 3.5.11.3	3.5.11.4, 3.5.11.5, 3.5.11.6, 3.5.11.7, 3.5.11.8

Topic	Objective	Policy	Method	Rule
sink holes	5.1.2, 5.1.3	5.1.3 Policy 2, 5.2.3 Policy 2		5.1.4.17, 5.2.5.1, 5.2.5.2, 5.2.5.3, 5.2.5.4, 5.2.5.5, 5.2.5.6, 5.2.6.1, 5.2.6.2, 5.2.6.3, 5.2.6.4
structures – accelerated corrosion	6.1.2 Objective 3	6.1.3 Policy 1	6.1.8	6.1.10.4, 6.1.11.1
structures – in river and lake beds	3.6.2, 4.2.2, 4.3.2	3.6.3, 4.2.3, 4.3.3	4.2.4	3.6.4, 3.6.6, 4.2.4 to 4.2.21, 4.3.6.1
surface water takes (see water takes)	3.1.2	3.3.3 Policies 1, 4 and 5	3.3.4.1 – 3.3.4.4	3.3.4.6, 3.3.4.7, 3.3.4.10, 3.3.4.11, 3.3.4.12
suspended solids	3.1.2, 3.6.2	3.2.3, 3.5.3, 3.6.3	3.2.4.5	
tangata whenua	2.3.2, 3.1.2, 4.2.2, 4.3.2, 5.1.2, 5.2.2, 5.3.2, 6.1.2	3.5.3, 3.6.3, 3.7.3, 3.8.3, 3.9.3, 4.2.3, 4.3.3, 5.1.3, 5.2.3, 5.3.3, 6.1.3, 7.2.3	2.3.4	
tracer discharges	3.1.2	3.5.3	3.5.4.3	3.5.91, 3.5.92
tracking and roading	5.1.2	5.1.3	5.1.4	5.1.4.11, 5.1.4.13, 5.1.4.14, 5.1.4.15
transfer of water permits	3.1.2, 3.3.2	3.4.3 Policy 3	3.4.4	3.4.4.3, 3.4.4.4, 3.4.4.5
Use of water	3.3.2	3.4.3 Policy 1	3.4.5	3.4.5.4, 3.4.5.5, 3.4.5.6, 3.4.5.7, 3.4.5.8
vegetation clearance	4.3.2, 5.1.2	4.3.3 Policy 3, 5.1.3	4.3.9.1, 5.1.4	4.3.9, 5.1.4.11, 5.1.4.13, 5.1.4.14, 5.1.4.15, 5.1.4.16, 5.1.4.17
vegetation clearance in coromandel catchments	5.1.2	5.1.3 Policy 2		5.1.4.16
vegetation clearance in karst landscapes	5.1.2	5.1.3 Policy 2		5.1.4.17
vegetation removal	4.3.2, 5.1.2	4.3.3 Policy 3, 5.1.3	4.3.9.1, 5.1.4	4.3.9, 5.1.4.11, 5.1.4.13, 5.1.4.14, 5.1.4.15, 5.1.4.16, 5.1.4.17
vegetation removal – in, on, or under the beds of rivers and lakes	4.3.2	4.3.3 Policy 3	6.1.6.1	4.3.9.2, 4.3.9.3
vehicle emissions	6.1.2 Objective 1, Objective 3	6.1.3 Policy 3	6.1.6.1	
visibility (air)	6.1.2	6.1.3 Policy 1, Policy 2, Policy 3	6.1.8	
waahi tapu			2.3.4.22	3.6.4.4, 3.6.4.5, 3.6.4.6, 3.6.4.7, 3.6.4.8, 3.6.4.9, 3.6.4.11, 3.6.4.12, 3.6.4.16, 3.8.4.6, 3.8.4.7, 4.2.5.1, 4.2.6.1, 4.2.7.1, 4.2.8.1, 4.2.8.2, 4.2.9.1, 4.2.9.2, 4.2.9.3, 4.2.10.1, 4.2.11.2, 4.2.13.1, 4.2.14.1, 4.2.15.1, 4.2.15.2, 4.2.16.1, 4.2.17.1, 4.2.19.1, 4.2.20.2, 4.2.20.3, 4.3.6.1, 4.3.7.1, 4.3.7.2, 4.3.8.1, 4.3.9.2, 5.1.4.14, 5.1.4.15, 5.1.5, 5.2.5.1, 5.2.5.2, 5.2.5.4, 5.2.5.5, 5.2.6.1, 5.2.6.2, 5.2.6.3
waste oil	5.2.2	5.2.3	5.2.4.2	5.2.9.2
water levels in wetlands	3.6.2, 3.7.2	3.6.3, 3.7.3	3.7.4.5	3.6.4.12
water management classes	3.1.2, 3.6.2	3.2.3, 3.6.3	3.2.4	3.6.4.4, 3.6.4.8, 3.6.4.12, 3.6.4.14, 3.6.4.15

Topic	Objective	Policy	Method	Rule
water permit transfers	3.1.2, 3.3.2	3.4.3 Policy 3	3.4.4	3.4.4.3, 3.4.4.4, 3.4.4.5
water takes – surface	3.1.2, 3.3.2	3.2.3, 3.3.3 Policy 6, Policy 7, Policy 8, Policy 11, Policy 13, Policy 14, Policy 20	3.3.4	3.3.4.13, 3.3.4.14, 3.3.4.16, 3.3.4.17, 3.3.4.18, 3.3.4.19, 3.3.4.21, 3.3.4.22, 3.3.4.23, 3.3.4.25, 3.3.4.26
water takes – ground	3.1.2, 3.3.2	3.2.3, 3.3.3 Policy 10, Policy 12	3.3.4	3.3.4.12 , 3.3.4.14, 3.3.4.15, 3.3.4.20, 3.3.4.24, 3.3.4.26
water takes – domestic	3.1.2, 3.3.2	3.2.3, 3.3.3 Policy 9	s14 RMA, 3.3.4.5	3.3.4.12, 3.3.4.13, 3.3.4.16, 3.3.4.18, 3.3.4.21, 3.3.4.23, 3.3.4.26
wetlands – damming	3.6.2	3.6.3	3.6.4.2	3.6.4.12, 3.6.4.16
wetlands – discharges	3.1.2, 5.2.2	3.5.3 Policy 2, 6, 5.2.3	5.2.4.3	3.5.4.6, 5.2.5
wetlands – drainage	3.7.2	3.7.3	3.7.4	3.7.4.6, 3.7.4.7
wetlands – water takes	3.1.2	3.2.3, 3.3.3	3.4.4	3.3.4.25
whitebait stands	4.2.2	4.2.3 Policy 1		4.2.6.1