

envirocare

your environmental news update from Environment Waikato

Waikato's Challenge

Looking after our
Region's environment



Quick facts

- The Waikato used to have widespread wetlands - now they are some of our rarest and most at-risk ecosystems. About 90 percent of them have been lost nation-wide.
- There are about 6000 dairy farms in the Waikato. About 70 percent discharge effluent onto land.
- The Waikato Region's population is now 381,900 and 76 percent live in urban areas.

We enjoy living in the Waikato and treasure the environment we have to live in. We have a productive landscape and industries, and opportunities to enjoy our abundant bush, lakes and beaches.

Environment Waikato's work is based around looking after the natural resources you enjoy so they are available for future generations. To do this we need to balance the needs of different land uses and industries with the needs of the environment and the value the whole community places on our Region's social, economic, environmental and cultural development. Defining and achieving this balance is not easy, and it often involves conflicting interests.

The concept of 'slipping values' is a real challenge for environmental management. Gradually, as things decline over time, people get use to it and expectations decline. The risk is that there will become a point where the effect of our activities becomes irreversible, such as the loss of a species and pollution of groundwater, or that significant parts of the environment are unsustainable, through nutrient enrichment of our lakes or taking groundwater faster than it can be replaced.

To meet our responsibilities under the Resource Management Act we must create tools and boundaries that will safeguard key parts of our environment against this 'slippage'. We establish these boundaries using legal rules in our Plans, such as the Waikato Regional Plan and Waikato Coastal Plan and develop tools to address specific issues, such as our Clean Streams fencing project and the Natural Heritage Fund.

Our research shows that Waikato people have a strong environmental belief, and that people across our community are concerned about pollution and water quality.

It's not only individuals who need to care for these natural resources.

Many of these natural assets are also important for industry. A sustainable soil resource and clean, available water are the basic strategic assets that our Region's land-based economy is built on. Economic prosperity is important for sustaining our Regional community, but a sustainable environment is critical for our long-term future.

The challenge is getting the balance right between productive use of the environment and sustaining it for our grandchildren.

It's our job to use what we know to ensure a healthy environment, now and for future generations. Our contribution to this sustainable future is included in our Draft Annual Plan.

The challenge is getting the balance right between productive use of the environment and sustaining it for our grandchildren.

Our current work in the Lake Taupo catchment is a good example. Working in partnership with Ngati Tuwharetoa, Taupo District Council and the Ministry for the Environment, an Action Plan for sustainability has been developed through the 2020 Taupo-nui-a-Tia project. This sets out an integrated strategy for the catchment. The Variation or change to our Regional Plan for Taupo and the public fund being set up will set some clear boundaries and tools for establishing a sustainable balance in the Lake Taupo catchment.

There are other key issues in the near future that we will need to work together on as a Regional community. These include the effects of intensive land use and land use change, and coastal and urban development pressures. We'll need to work with our partners, local councils, iwi groups, industry and community groups to get the balance right.

You also have a role in this challenge and we want to hear your opinions. Keep an eye out for opportunities to get involved.

Special
2005/2006
Draft Annual
Plan
liftout inside
Make sure
you have
your say!

In this issue of EnviroCare you'll find a four-page liftout detailing our **2005/2006 Draft Annual Plan**. You can have your say about what we're doing. Check out our website www.ew.govt.nz to find out more, or call Environment Waikato's Freephone **0800 800 401**.

**Environment
Waikato**
REGIONAL COUNCIL



CEO's Message

This issue of EnviroCare includes a supplement on our plans for the coming year. It's your opportunity to tell us what you think about the work we are doing and what you'd like to see happen in our Region.

Talk to your local Councillor, make a submission and get involved in the important work we are doing in the Waikato.

We need to manage the effects of our activities on the environment to ensure we have a healthy Region for the future.

Harry Wilson
CHIEF EXECUTIVE

Algae Blooming in Waikato Lakes

Algal blooms are still causing problems in Waikato's lakes.

This summer nine cattle died after drinking water from algal-contaminated Lake Rotongaro.

They had access to the lakeshore and had been drinking the water. Our staff sampled the lake after the deaths were reported and found very high levels of the blue-green alga *Microcystis* and the algal toxin microcystin - 40 times higher than stock drinking water standards with toxin levels many times higher.

Algae occur naturally in lakes and ponds and flourish during hot, fine conditions. Blooms are worsened by other factors, such as the amount of available plant nutrients, phosphorus and nitrogen within a lake. Most algae are harmless but high levels of blue-green algae are toxic to both people and animals.

The cattle deaths are a reminder that stock shouldn't have access to waterways so they don't contaminate water or drink contaminated water.

Several small lakes in the Waikato had algal blooms this summer, with levels well above the guidelines for swimming, boating or jetskiing. Health warnings were needed at lakes Hakanoa, Kainui, Ngaroto, Waahi and Whangape.

Check out their condition on our website www.ew.govt.nz

Work begins on Thames Coast

The first flood protection work by the Peninsula Project team on the Thames Coast was done in February at Te Puru.

The work involved removing built-up sand and gravel from the stream channel and putting it on the foreshore, which not only better protects Te Puru School but also re-nourishes the beach.

The team is also improving things for a Coromandel retirement village. During Easter 2003 high rainfall in the Whangarahi catchment flooded parts of Coromandel town, including the Elizabeth Park Retirement Village. Since then, the village, neighbouring landowners and councils have worked together and work began this month on stopbanking to protect the village.

At a hui in late 2003 at Manaia, local people raised concerns about flooding and riverbank erosion threatening access to the marae. Following some investigative work and further discussions with community representatives, work was done last month on protecting the riverbank near the marae. Environment Waikato, through the Peninsula Project, is contributing expertise, along with 35 percent of the funding. The local community is contributing the rest of the funding.

We've applied for resource consents for stopbanking works on the Tararu Stream and channel maintenance works on the Tararu, Waiomu, Pohue, Tapu, Karaka (Coromandel) and Whangarahi streams.

The Peninsula Project recognises the importance of protecting and maintaining our cultural and historical heritage. An archaeological assessment of proposed maintenance work areas has gone hand-in-hand with our consent process.

In April/May this year, Environment Waikato and Thames-Coromandel District Council will be working with the flood mitigation working parties along the Thames Coast to progress development and get agreement on any more capital works needed in these communities.

The Peninsula Project was developed to help address flood risks affecting communities across the Peninsula and improve the health of the environment. It's a collaborative project between Environment Waikato, Thames-Coromandel District Council, Department of Conservation and the Hauraki Maori Trust Board.

Want to know more? Call Environment Waikato's Freephone 0800 800 401.

What's happening at Environment Waikato

► We now have 40 facilitated Enviroschools in the Region and 20 schools in the Enviroschools Awards programme. This programme integrates environmental education into school life. Students take part in planning, designing and changing the school's environment to make it healthy, stimulating and sustainable. Want to know more? **Call Dean King on Environment Waikato's Freephone 0800 800 401.**

► Throughout the Region, 388 properties have taken part in the Clean Streams project. We've granted money to 156 landowners who have completed 323km of fencing. Clean Streams is an Environment Waikato project to encourage and support farmers to reduce the effects of farming on waterways. Advice and financial support of up to 35 percent of costs for fencing and planting waterway margins is available.

► Visit our Fieldays site. Mystery Creek, June 15 - 18 at site G60. Discover what we're doing to manage the health of our Region's water resources and the things you can do to help. Our Region's water quality faces major pressures that threaten our ability to use it for farming, horticulture, drinking, swimming, fishing and boating. Many farmers are already taking steps to protect and improve streams on their land and industries are taking the initiative to support and promote sound environmental practices.

► Is your business performing well environmentally? Have you developed a new innovation to enhance the quality of our environment? Are you a not-for-profit organisation working for the environment? Enter the Business and the Environment Awards 2005 before April 22. **Call WEBN Co-ordinator Julie Albertsen on 07 839 4452 or check out the website www.ebn.co.nz**

► Drop into the Conference Room, Thames War Memorial Civic Centre, Thames on Saturday, April 30 between 12 noon and 4pm to find out more about what we're doing to address flood risks on the Thames Coast. As part of the Peninsula Project, a variety of work from river maintenance to animal pest control is planned. This work will reduce flood risks on the Thames Coast and improve the health of the environment. Environment Waikato, Thames-Coromandel District Council, Department of Conservation and the Hauraki Maori Trust Board are holding an information day on April 30 to share information and provide an opportunity for people to talk to staff about the work. **For more information call Environment Waikato's Freephone 0800 800 401.**

► The Supreme Winner of the Waikato Ballance Farm Environment Award is Matthew Truebridge of Waihaha Road of Western Bay, Turangi. Matthew also won the Environment Waikato Protection of Water Award and the Ballance Nutrient Management award. Attend the field day at his farm on April 27, starting at 10.00am. **Email Waikato@bfea.org.nz for more information or call Environment Waikato's Freephone 0800 800 401. Check out the winning farms on www.ew.govt.nz/newsandevents/fea/index.htm**

► We're developing a Regional Land Transport Strategy. A round of Regional workshops has recently been completed with key organisations to identify transport issues facing the Region. If you'd like to be involved or find out more, **call the Land Transport team on Environment Waikato's Freephone 0800 800 401.**

► We're involved with the Waikato Biodiversity Forum Hui on May 21 at the Whangamata Community Centre. The focus will be on biodiversity-related projects and information sharing. Find out about the work of conservation groups on the Coromandel and visit some of these projects around the Whangamata area. **For more information call Environment Waikato's Freephone 0800 800 401**



Flood protection work is underway on the Thames Coast.

2005/2006 DRAFT

ANNUAL PLAN SUMMARY

Environment Waikato is seeking feedback on a number of proposals - the 2005/06 Draft Annual Plan, amendments to the 2004-2014 Long-Term Council Community Plan and establishment of Council Controlled Organisations. Read these summaries and make a submission.

A Sustainable Future

Our well-being as a community depends on a healthy environment - the way we live, how we use our land, what we buy and use.

We've just released our Draft Annual Plan and we'd like to know what you think. Our first Long-Term Council Community Plan (LTCCP), our plan for a sustainable future, was completed in 2004 and this is Year Two of that Plan.

The LTCCP described our work: combating plant and animal pests, addressing pressures on our coasts, helping farmers fence stock out of streams and balancing energy production from dams and geothermal plants with the need to protect natural resources. Major new projects, such as Protecting Lake Taupo and work on the Coromandel Peninsula to manage problems with rivers and streams, were outlined.

The changes this year are mostly from re-prioritised work programmes. For example, we've increased spending to speed up our response to a number of pressing environmental issues, including national standards for air quality, changes in land use and the growing intensification of agriculture which is putting the Region's water quality at risk.

This proposed 2005/2006 budget would add another \$2 - \$5 for each ratepayer over what we forecast in the LTCCP, meaning an estimated \$13 - \$23 increase for most ratepayers.

As well as the Draft Plan, we're also asking for your ideas on other proposals: to create Council-controlled organisations - one to set up a trust to administer the Protect Lake Taupo fund, one to promote shared services such as a valuation database among councils and another to manage animal pest control operations in the Region and elsewhere.

What Will My Rates Be?

Overall, this Draft Annual Plan would result in about a \$13 - \$23 rate increase for most ratepayers. Exact rates will vary, depending on property values and where you live, as well as how recently properties have been re-valued.

The amount the Council needs to collect through the General Rate is divided amongst the number of properties throughout the Region and their values. The growing number of properties in our Region spreads the rate burden over more properties. Properties around the Region are also re-valued yearly or three-yearly, depending on the local council. If your property valuation has gone up more than the average during the last year, your rates will increase.

A Snapshot Of Your Rates

Rates are made up from:

- General Rate - applied to all properties, capital value-based
- UAGC - uniform annual general charge - applied to all properties
- Transport Rate - only in Hamilton, capital value-based
- Pest and Weed Control Rate - applied on all properties less than 2 ha, a uniform (fixed) charge
- Biosecurity Rate - applied to rural properties greater than 2 ha, land area-based
- Natural Heritage Rate - applied to all properties, uniform charge
- Lake Taupo Protection Rate - applied to all properties, uniform charge

Other rates may apply to your property, such as catchment schemes, Project Watershed or the Peninsula Project.

Ask Us!

If you'd like detailed information on your proposed individual rates for 2005/2006, you can:

- log onto our website www.ew.govt.nz/rates
- call Environment Waikato's Freephone 0800 800 401.

Have the valuation reference number of your property or properties ready or just use your address/es and follow the simple instructions.

You'll find the answer to many commonly asked rates questions on our website,

www.ew.govt.nz/aboutew/rates/questions or call the rates team on **Environment Waikato's Freephone 0800 800 401** or email us at rates@ew.govt.nz

How to get involved and have your say!

We'd like to know your views on the:

- **2005/2006 Draft Annual Plan**
- **amendments to the 2004-2014 Long-Term Council Community Plan**
- **the Proposal for Local Authority Shared Services organisation**
- **the Proposal for the Lake Taupo Protection Trust and**
- **the Proposal for Contract Management of Tb Vector Control.**

Read this EnviroCare and consider the proposals, talk to your local Environment Waikato Councillor, visit our website

www.ew.govt.nz or call Environment Waikato's Freephone 0800 800 401. You can make a submission on the Draft Annual Plan and if you want to, you can present your submission in person to a special meeting of the Council at the end of May.

If you want to know what your rates will be for 2005/2006 under this Draft, check out www.ew.govt.nz/rates



The Finances

Overall, most of the work planned for next year is as we projected in our Long-Term Council Community Plan.

However, since developing our LTCCP, a number of new work priorities have been identified. Funding for some of this work is in this Draft Annual Plan.

Some of the other important and desirable work won't be funded at this stage. In other cases, existing work programmes have been put off or re-prioritised to accommodate the additional work.

In total, proposed spending for 2005/06 is \$66.955 million, which is \$3.508 million above LTCCP projections. This includes new work. It also includes development of the Lake Taupo Water Quality variation (\$352,000), which the LTCCP incorrectly stated would be funded through the special Protecting Lake Taupo targeted rate. This variation, in line with our funding policy, is correctly funded by the General Rate. We've also increased the budget for our Resource Use Group by \$600,000 to recognise its expected spending for next year.

Spending on transport functions is proposed to increase by \$1.309 million over LTCCP projections. This is expected to be funded by more grants from Land Transport New Zealand (LTNZ) (\$979,000) and from the Transport Reserve (\$340,000) for passenger transport activities. These projects and costs will be finalised with LTNZ before the Plan is adopted. The transport rate paid by people in Hamilton will not increase as a result of this additional spending.

General Rate revenue is forecast to increase by \$2.996 million, against the LTCCP forecast of \$1.818 million. Growth across the Region means this will increase our General Rate from \$31.75 per \$100,000 of capital value to \$35.50, or 11.9 percent.

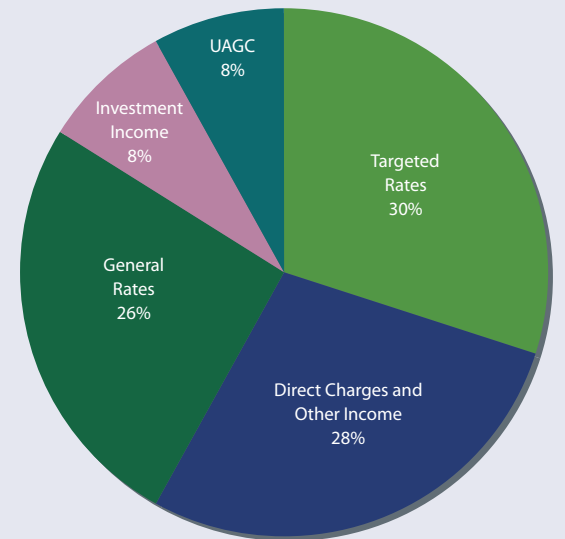
Targeted rate revenue, only paid by people who benefit from, or create the need for the work we do, is proposed to increase by \$3.077 million, against a forecast increase of \$2.582 million in the LTCCP. As indicated in the LTCCP, the Protecting Lake Taupo rate will increase from \$9 per rateable property to \$18. The Natural Heritage Protection Rate will remain the same at \$5.60 per property.

Overall, this Draft Annual Plan will increase rates by about \$13 - \$23 for most ratepayers. Exact rate levels will vary depending on property values and where you live, as well as how recently your property has been re-valued.

Seventy-five percent of Environment Waikato ratepayers pay a total bill of less than \$350.

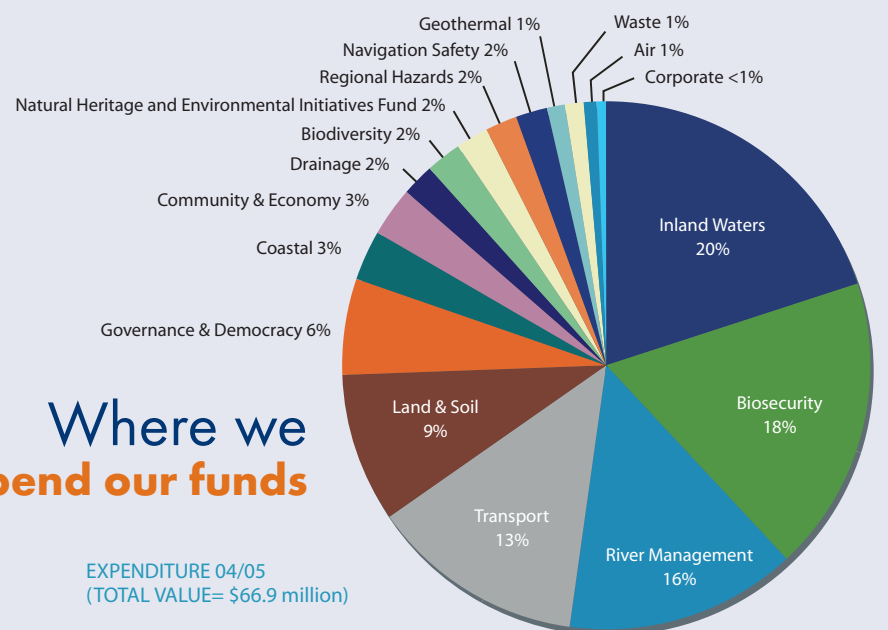
Where our funds come from

REVENUE 04/05
(TOTAL VALUE= \$69.0 million)



Where we spend our funds

EXPENDITURE 04/05
(TOTAL VALUE= \$66.9 million)



Setting up New Organisations

Council-Controlled Organisations or CCOs are organisations in which one or more councils control 50 percent or more of the voting rights, or have the right to appoint half or more of the directors. Council-Controlled Trading Organisations (CCTO) are Council-controlled organisations that trade to make a profit.

For a Council to establish a CCO, or to become a shareholder, the Local Government Act 2002 requires that a special consultation process is followed, giving people the opportunity to comment on the proposal. We're doing this at the same time as consulting on the Draft Annual Plan and amendments to the 2004-2014 LTCCP. What we're planning is:

- Local Authority Shared Services – a CCO established as a company where each local authority will have a single share. This company will be used as an umbrella company to develop shared services, for example a Regional valuation database.
- Lake Taupo Protection Trust – a CCO to manage the distribution of funds collected for the Protect Lake Taupo project.
- Contract Management of Tb Vector Control – a CCTO to actively manage Tb vectors in the Waikato and seek contracts from outside the Region.

Visit our website www.ew.govt.nz or call **Environment Waikato's Freephone 0800 800 401** for more information.

Sharing Services

We're asking what you think about Environment Waikato establishing and becoming a shareholder in a Council Controlled Organisation (CCO), in collaboration with the other councils in the Waikato Region.

This organisation will help us to develop and deliver shared services throughout the Region.

Since 1998, ratings and valuation officers within the Waikato councils have been co-ordinating their activities to make rating and valuation services more effective and efficient. In 2002 they realised that a competitive valuation service provider needed to have sophisticated data management skills and systems. We could do this if the councils collectively provided a valuation database service.

No-one else was providing this sort of service so we needed to establish it ourselves. The councils then assessed the most appropriate governance structure for this kind of shared service. Four options were assessed and, after considering them all, councils asked Environment Waikato to establish a Shared Valuation Database Service under a stand-alone business unit that, at a later date, would be moved to a Council Controlled Organisation structured as a Limited Liability Company.

Other councils in the Waikato are interested in being shareholders in a CCO that can act as an umbrella company for future development and the delivery of shared services throughout the Region, such as a valuation database. A number have agreed to be involved in the establishment of the Local Authority Shared Services Limited.

Each council will hold one of 13 shares in the Company which will have six directors (representatives of the councils) plus up to three additional, professional directors.

Participating councils will be able to access particular shared services through an agreement providing appropriate obligations and benefits for each service.

If a number of local authorities participate in buying or developing infrastructure for the shared service and its on-going operation, it will save money. There are a number of services provided by councils, particularly in information collection and management, where cost saving benefits could be achieved.

Visit our website www.ew.govt.nz or call **Environment Waikato's Freephone 0800 800 401** for more information.

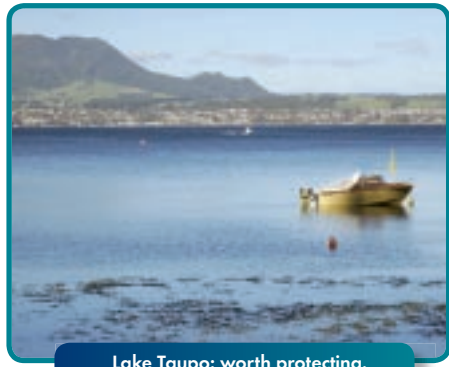
Protecting Lake Taupo Trust

Environment Waikato and Taupo District Council are considering establishing a Council Controlled Organisation (CCO) to administer the public fund for protecting Lake Taupo.

Along with contributions from Central Government, in July 2004 Environment Waikato and Taupo District Council began collecting rates to establish a public fund to reduce the amount of nitrogen entering the lake by 20 percent.

A Trust to administer this Fund would need a common focus for the project, a transparent mechanism for spending the funds and independent decision making and action. The funding partners recommended a CCO as a charitable trust known as the Lake Taupo Protection Trust with a maximum of eight trustees.

The purpose of the Trust is to maintain the water quality in Lake Taupo by reducing nitrogen levels in the Lake Taupo catchment area. To achieve this, the Trust will be able to use a broad range of methods, including purchasing land for retirement or converting to low nitrogen uses. Other methods could include research and providing advice or partnerships with landowners. It will be up to the experts on the Trust to identify the most efficient and effective ways of permanently reducing nitrogen levels in the catchment.



Lake Taupo: worth protecting.

A joint inter-agency committee will oversee the work of the Trust. The agency will be made up of representatives from the three funding partners (two from each) and with two nominees from Tuwharetoa Maori Trust Board.

Each year the Trust will submit a Business Plan to the joint committee and will also be required to report to the committee on progress half way through and at the end of the financial year.

Managing Possum Control

We're proposing to establish a Council Controlled Trading Organisation (CCTO) to manage our bovine Tb control contract obligations.

We currently receive \$750,000 a year in management payments from the Animal Health Board to cover the costs of control operations in areas where possums and other pests spread Tb. This covers costs such as contract management, database costs, technical design of programmes and aerial photography.

These payments from the Animal Health Board will progressively reduce in the coming years. We will then have to increase rates to cover the fixed costs of management systems to maintain our capability, or reduce our capability and risk losing some of the gains made in bovine Tb control.

This could also mean our expertise in pest management work could be lost.

We're proposing to establish a Council Controlled Trading Organisation (CCTO) to manage bovine Tb control contracts and possibly other regional councils' contracts. The company could also expand its services to include managing a wider range of pest management contracts.

Managing other regions' contracts would benefit Environment Waikato and ratepayers by increasing use of our in-house contract management skills, data management, communications and accounting services. Money received from out-of-region contracts would offset the fixed costs of management systems.

The proposal is not expected to cost Environment Waikato anything, and could provide a number of benefits, including reducing financial risk, retaining critical expertise and reducing reliance on rates for funding pest control.

The CCTO would be governed by a board of six elected directors.

A copy of the Statement of Proposal is available from Environment Waikato and on our website www.ew.govt.nz

Rates Remissions

Last year we introduced a Uniform Annual General Charge (UAGC) and a number of targeted rates levied on a per property basis.

But this meant a dramatic increase in the rates burden on properties which were worth very little. In some cases the annual rates levied on a property have been almost half the property's Capital Valuation, which clearly isn't fair.

The most practical way of helping these ratepayers is granting remissions. There were three options remitting all rates on properties with a Capital Value of \$500, \$1,000 or \$2,500 or less (that are not next to each other). So people who have a very small, bare piece of land would not have to pay anything.

We're proposing a new policy. It's a rates remittance on properties of \$1,000 Capital Value and less. This would mean everyone else's rates would increase by about 24 cents.

We also intend to amend the Remission of Penalties policy to allow applications for remissions of amounts less than \$250 to be done by phone, email or in person.

Whiritoa to join Peninsula Project

Last year we consulted with communities and ratepayers about services to help deal with erosion, animal pests, river erosion and debris blocking rivers and streams, and flooding on the Coromandel Peninsula.

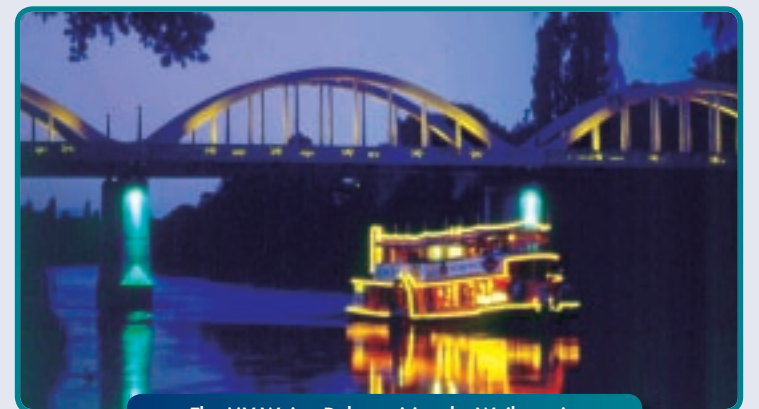
The Peninsula Project area lies mostly within the Thames-Coromandel District Council boundary and residents within the Council's area pay rates for the work needed. Environment Waikato does similar work and applies a similar rate within the Waihou Valley Scheme which borders the Peninsula Project area.

We're proposing that part of the Hauraki District around Whiritoa be brought within the Peninsula Project from July 2005. This was forecast in the LTCCP and would allow us to offer a consistent service to this area.

We're talking to ratepayers in the area about the proposal.

A Snapshot of the Waikato

- Our population is now about 381,900.
- About 75 percent of people live in urban areas. We have higher populations of Maori (21.1 percent) than nationally and a slightly younger average age than the rest of New Zealand. We also have above average population density - 15.0 people per square kilometre compared with 14.1 nationally.
- Eight rohe or tribal areas lie within the Region.
- The Waikato is the fourth largest Region in New Zealand, covering most of the central North Island - 25,000 square kilometres (or 2.5 million hectares). The Region has the country's fourth largest city and 11 districts, four of which lie across the Regional boundary.
- Our Region has more than 100 lakes, more than 20 rivers and about 1420 streams. It also has 1150 kilometres of coastline.
- The Waikato is the most important mineral producing area in the country and we have 12 hydro, one thermal and five geothermal power stations operating in the Region. There are also smaller generators and co-generation plants.
- Our Region produces about eight percent of New Zealand's gross domestic product and the biggest employers are agriculture, forestry, manufacturing, engineering, education and health and community services. Our agriculture, forestry and mining are significantly important to the Region.
- Our economy relies on natural resources which provide materials and energy for the country's industries.
- 75 percent of all Environment Waikato ratepayers pay a total Regional Council rates bill of less than about \$350.
- Rates - General Rate, UAGC and targeted rates - provide 63 percent of our revenue. The rest comes from direct charges, leased grazing land and our Investment Fund. The General Rate is only 26 percent of our total revenue.



The MV Waipa Delta cruising the Waikato river

First Grant for Natural Heritage

We've granted \$2.1 million to the Maungatautari Ecological Island Trust to help restore the native animals and plants to the Region - the first grant from our newly established Natural Heritage Fund.

The project, south west of Cambridge, is building a 47km pest-proof fence around the 3400 ha forest on the mountain. Once the fence is built, all introduced mammals such as stoats and rats will be eradicated and rare native species will be restored.

A total of \$800,000 will be given immediately from the Fund to allow the Trust to proceed with this year's construction programme. The rest of the funds will be made available at the beginning of the next financial year.

The programme is funded by a targeted conservation rate adopted last year.

Total estimated cost of the Maungatautari project is \$14 million, of which \$9 million is for pest-proof fence construction. Our contribution will bring the total amount raised so far by the Trust to more than \$7 million and once finished the project will be self-funding through visitor charges for special attractions like guided walks, although free access will still be provided to the scenic reserve. The Trust is seeking \$6 million from Central Government.

The Trust is further developing two large enclosures on the mountain where educational programmes and extensive visitor services will be offered. The entire mountain is expected to be fenced by August next year.

Cr Barry O'Connor, who represents the Maungatautari area, says the project is already showing major conservation results. Twenty new insect species have been found on the mountain already, along with a population of the rare Hochstetter's frog.



Maungatautari - a special place.

Photo: Louise Dwan.

Quick facts

- Ratepayers pay \$5.62 per property for the Natural Heritage Fund - it's the same charge for everyone and isn't based on capital value.
- The rate raises about \$800,000 a year and will be reviewed again in 2006.
- The money will be used primarily to protect and restore threatened sites.
- We're working with district councils, Government, private landowners, iwi and the public to help secure a permanent public interest with leases, covenants, agreements or purchase of land in suitable areas.

Submission

Have Your Say!

Use this form to make a submission.

Tell us what you think about:

- **2005/2006 Draft Annual Plan**
- **Amendments to the 2004-2014 Long-Term Council Community Plan**
- **Local Authority Shared Services organisation**
- **Lake Taupo Protection Trust**
- **Contract Management of Tb Vector Control**

Get further information from our website www.ew.govt.nz or by calling **Environment Waikato's Freephone 0800 800 401**.

All written submissions on the consultation documents will be fully considered by the Council. You'll be told about the decisions made about the issues you raise after the proposals are adopted at the end of June.

Send your submission post free to:

Strategic Development Unit
 Freepost Environment Waikato
 PO Box 4010
 HAMILTON EAST 2032
 Fax (07) 856 0551
 Or email your submission to annualplan@ew.govt.nz

Please include the following information as part of your submission:

Submitter

Name: _____

Group or organisation if submission is on behalf of others: _____

Postal Address: _____

Telephone: _____ Daytime: _____ Mobile: _____

Fax: _____ Email: _____

I/We wish to present my/our group's comments to the Council in person Yes /No _____

Signed: _____

Your submission

The Council wants to know as clearly as possible the issues that you are commenting on and the changes/additions/deletions you recommend.

- If you are referring to a particular page in the Plan, please indicate the page number next to your comments.
- Please type your submission, or write it clearly in black ink, as it will be photocopied.
- Add extra pages if required.

KIDS GET INTO the environment

Environment Waikato's Brett Moore took a group of students through a Healthy Water activity at last month's second Waikato EnviroSchools Expo in Hamilton.

The Expo was co-ordinated by Environment Waikato, the EnviroSchools Foundation, Waikato and Waipa District Councils, Hamilton City Council, DoC and other supporting organisations. It's a two-day event

catering for 600 students from EnviroSchools throughout the Region and is made up of interactive environmental



education activities based on the five themes in the EnviroSchools Kit - Living Landscapes, Healthy Water, Zero Waste, Precious Energy and Ecological Buildings. The Expo is a real-life, inspirational event for both students and teachers who gain links to valuable ideas and resources and take them back to their schools and communities to take action for their



Brett Moore and students at the EnviroSchools Expo.

kidscare

"Hey kids!

Have a go at this..."

See how many words about our Annual Plan you can find in the wordfind below!



wordfind

See how many of these words you can find in this Wordfind. They're written forwards, backwards, sideways and upside down.

CONSULTATION
DECISION
PLAN
LTCCP
COUNCIL
PUBLIC

SUBMISSION
SAY
FUTURE
WORK
ENVIRONMENT
WAIKATO

POLICY
ANNUAL
REPORT
COMMUNITY
FEEDBACK
REGION

STRATEGY
STATEMENT
OUTCOME
IMPACT

A	N	N	U	A	L	P	G	F	D	N	O	I	G	E	R	T	U
A	G	K	N	C	T	C	A	P	M	I	E	H	J	U	I	O	P
L	O	R	Y	O	C	O	N	S	U	L	T	A	T	I	O	N	T
L	H	K	O	U	C	J	Y	T	W	E	F	R	B	M	A	X	W
S	A	U	L	N	A	S	C	N	E	R	E	A	W	O	R	J	O
P	T	I	K	C	D	S	I	E	A	U	E	T	R	O	P	E	R
O	S	R	K	I	G	H	L	M	U	T	D	U	M	W	U	B	K
L	N	R	A	L	L	J	B	E	S	U	B	L	T	C	C	P	R
I	O	E	W	T	Y	U	U	T	E	F	A	U	S	E	S	E	M
C	I	O	L	T	E	P	P	A	U	B	C	A	S	U	W	U	A
Y	S	P	E	R	I	G	O	T	U	B	K	U	A	U	B	M	P
N	I	M	E	R	T	Y	Y	S	M	E	U	E	Y	N	U	S	R
B	C	Q	W	S	U	B	M	I	S	S	I	O	N	E	A	U	E
V	E	O	U	T	C	O	M	E	W	R	M	A	L	U	W	L	A
C	D	X	Z	E	Y	T	I	N	U	M	M	O	C	S	M	U	P
E	N	V	I	R	O	N	M	E	N	T	W	A	I	K	A	T	O

protect our landscape!

Colour in this picture of our beautiful landscape and be in to win an Environment Waikato Funpack. Get your entry in by June 15, 2005 to: EnviroCare, Freepost Environment Waikato, PO Box 4010, Hamilton East.

Please tick

Under five 5-10 years 11-15 years

Name _____

Address _____

We had plenty of entries for our Summer Colouring competition.

WINNERS were:

Under five

Tahlie Toma of Kihikihi and **Ngaere Ward** of Huntly.

5 to 10 years

Claire Wang of Hamilton and **Ella Scown** of Ohaupo.

11-15 years

Belinda Thongkhamchanh of Cambridge and **Joanne Antonia** of Hamilton.

There were lots of clever entries for our **Make words from water** competition too!

The winner was **Petraa Reid**, 13, from Silverdale in Hamilton who had the bright idea of also using Maori words - and came up with a total of 158. **Well done Petraa!**



Royal Forest and Bird

UPPER COROMANDEL BRANCH

AGM

May 14, St John Hall, 10 am, \$2

VIDEO EVENING

June 23, St John Hall, \$2

SOUTH WAIKATO BRANCH

MONTHLY MEETING

Every 2nd Wednesday of the month 7.30 pm
Contact: Jack or Anne (07) 886 7456

Waikato Tramping Club

Waikato Tramping Club
www.wtc.org.nz

UREWERA NATIONAL PARK

April 23-25
Contact: Neil Rowe (07) 858 2114

WAIROGAMAI VALLEY

May 1
Contact: Neil Rowe (07) 858 2114

MT MESSENGER - WHITE CLIFFS

May 7-8
Contact: Neil Rowe (07) 858 2114

COROMANDEL - CROSBIES TO WAIUMU

May 21-22
Contact: Alan Wilson (07) 828 8727

PUREORA - WAIHORA LAGOON - NUTFIELD LODGE

June 4-6
Contact: David Haydock (07) 854 5549

CLUBNIGHTS

8 pm, 1st Wed of each month
St Stephens Church Hall, Cnr Ohaupo Rd and Mahoe St
\$2 includes hall hire and supper.

Breakaways Tramping Club

MANGAOKEWA RIVER SCENIC RESERVE

April 17
Contact: Graham (07) 824 1814

THAMES

May 1
Contact: John (07) 823 6316

MAUNGATAUTARI - HICKS ROAD

May 15
Contact: Adrian (07) 887 4706

HAKARIMATA RANGE

May 29
Contact: Claire (07) 828 8566

MICK'S FARM

June 12
Contact: Mick (07) 887 4710

PIRONGIA

June 26
Contact: June (07) 856 3407

Kauaeranga Tramping Club

AWAKERI HOT POOLS

April 23-25
Contact: Glenys Hull (07) 868 8268

CLUB NIGHT

May 2, 7.30 pm

COROMANDEL

May 8
Contact: Raewyn Bergham (07) 868 8498

WAIROGOMAI - TE AROHA

May 22
Contact: Merv Grafton (07) 868 3141

CLUB NIGHT

June 13

MT MAUNGANUI - BAY OF PLENTY

June 19
Contact: Glenys Hull (07) 868 8268

TE MATA

July 3
Contact: Charles Verry (07) 868 3442

CLUB NIGHT

July 4

TARARU VALLEY

July 17
Contact: Elva Elby

KOPU-HIKUAI RD TAIRUA RIVER

July 31
Contact: Bob Harris (08) 868 7348

Mountain Safety Waikato

Regular courses on abseiling, bushcraft, bushcraft for women, river safety, bush navigation and snowcraft.
Contact: Milli Lovell (07) 827 1070, email: waikato@mountainsafety.org.nz

Hamilton Tramping Club

MOKI TRACK

April 23-24
Contact: Gail and Paul (07) 825 2133

TARATIKI STREAM LOOP

May 8
Contact: Lynne (07) 855 1447

AGM

May 16, 7.30 pm
Lone Star Restaurant, Victoria Street, Hamilton.

EASTERN OKATAINA

May 22
Contact: Brett (07) 856 6582

WAIHAHA - ONGARUE

June 4, 5, 6
Contact: Kevin B (07) 838 1788

PIHA

June 18-19
Contact: Isobel (07) 827 5925

PUKEATUA

July 3
Contact: Isobel (07) 827 5925

Taupo Tramping Club

Contact: Barbara Morris (07) 378 6620

Taupo Fishing Club

Contact: Russell Rountree (07) 377 1177

Biodiversity Waikato

Contact: 0800 BIODIV 246 348

Putaruru Walking Group

WAIROA - LAKE TUTIRA

April 21-25
Contact: B and N Lucas (07) 883 1483

WAOTU WALK ABOUT

May 15
Contact: C Hedges (07) 883 1499

KATIKATI SAPPHIRE SPRINGS

June 10-12
Contact: J and R Brown (07) 883 1499

PORT WAIKATO

July 1-3
Contact: J and A Groos (07) 886 7456

WINTER SURPRISE

July 24
Contact: G McDonnell (07) 883 5825

Pirongia Te Aroaro O Kahu Restoration Society

Contact: Carla Vincent (07) 872 8168 or carlajoynz@hotmail.com

Hamilton Anglers Club

Contact: Stephen Martin Ph. 855 3762

EONZ Outdoor Education Workshops

Contact: Alison Porter (07) 871 5001
adele_grant@clear.net.nz

Department of Conservation

Contact: Margaret Stephens (07) 838 3363

Monday Bushtrampers (Sport Waikato)

Full day tramps, fortnightly from Memorial Drive, Hamilton 8 am, \$10. Alternate weeks from other Hamilton venues, 7.30 am.
Contact: Helen (07) 843 8692

Hamilton Search and Rescue Group

Meets 3rd Monday each month, 7.30 pm, Hamilton Central Police Station
Contact: John Twizell (07) 856 2844

Hamilton Junior Naturalists

Meets every Friday, Hamilton Rose Garden Horticultural Centre
7-8.30 pm in term time, for ages 11-17
Contact: John Dale (07) 855 4458, email Junats@Mahipai.co.nz

Guides

Guides Waikato has activities for young people 5-18 years. Call (07) 856 5965 for your local group, write to Box 44 or email guideswaikato@xtra.co.nz.

Scouts

Plenty of outdoor opportunities for young people 6-18 years with Scouting Waikato. Call 0800 SCOUTS (726 887) or email scoutingwaikato@xtra.co.nz for activities and events in your district.

Councillors' column

Steve Osborne

MATAMATA PIAKO



Protecting our waterways from the effects of stock effluent is a vital issue, especially in our area.

To help farmers meet the standards that both our Region's residents and international markets set for keeping our country clean and green, the Regional Council has changed its monitoring of farm dairy effluent.

In the past, all farm dairy effluent treatment systems in the Waikato were monitored each year by inspectors contracted to Environment Waikato. The visits aimed to identify where systems were breaching consent conditions or permitted activity conditions.

Some farmers only tidied up their effluent treatment systems when the AgriQuality contractor made an appointment to come and inspect it so we were not getting a true picture of the state of effluent management in our Region. This season, Environment Waikato started random monitoring both pond and irrigation systems.

With about 5000 dairy farms in the Region, inappropriate effluent treatment system management can cause considerable problems. Increasing herd sizes and using feedpads may stretch a system's ability to cope with more effluent.

Farmers now know they can be monitored at any time, and there is help for farmers to learn more about effluent management, such as workshops and an effluent guide.

Call me on 07 887 3830.

Life on a SMALL Block

Environment Waikato's Biosecurity staff were recently at the Small Block Expo in Hamilton helping visitors understand the importance of stopping the spread of plant pests.

Did you know that there are 85 species of plants in the Waikato Region that are considered pests? These plants grow so aggressively that they strangle and smother other plants. Many are in people's gardens - plants like privet, woolly nightshade, fine stemmed needle grass, moth plant, mignonette vine, wild ginger and pampas.

As townships and lifestyle blocks spread further each year, so do the plant pests. It's estimated that two to four new plants will become invasive every year. Landowners can play a big part in stopping the spread.

Want to know how?

- Remove plant pests from your property and choose new garden plants carefully.
- Dispose of plant pest carefully.
- Don't let plant pests 'hitch a ride' on your recreational and agricultural equipment.
- Start a 'weedbusters' group in your area to tackle infestations - check out www.weedbusters.org.nz

Quick Tips

Stopping the spread of plant pests is not the only environmental effect you need to know about to protecting the health and productivity of our rural land.

If you live on a lifestyle block you also need to know about:

- Your responsibility to control animal pests.
- Fencing and planting water margins to protect water quality and enhance habitat for native animals and plants.
- Planting native vegetation on steep land to stabilise soils.
- Stock access to clean drinking water.
- Drainage maintenance.
- Potential sources of groundwater contamination, such as septic tanks, animal effluent, fertilisers and pesticides.
- How your property was previously used. Could it be contaminated?
- Whether you can undertake activities that may cause air pollution or generate offensive odours, such as burning an open fire.
- Regulations for agricultural chemical use to avoid spray drift. Users must provide notification.

If you have trips and events organised for the winter - spring months (late July - September) send them into EnviroCare by June 15, 2005.